



**BEE VALVE INC.**

**Bee Valve Inc. is your first move  
for fluid handling components.**



**ISO 9001:2015**

# Bee Valve Inc.

has stood the **test of time.**

Bee Valve Inc. traces its origin back a half-a-century to the beginning of the modern plastics industry. The company was on the developmental forefront of plastic ball valves and was one of the first companies to use glass-reinforced polypropylene for this application. The company was also on the leading edge in the introduction of non-metallic hose couplers and adapters in the early 1970s, utilizing glass-reinforced nylon and polypropylene for economy and strength. Bee Valve has continued to focus on providing the industry with state-of-the-art materials and components. When you turn to Bee Valve for your fluid handling needs, you're turning to the market innovator.

# TABLE OF CONTENTS

## Ball Valves

Bolted Polypropylene Ball Valves	2
2" Ball Valves - Factory Assembled Options	2
2" Compact Ball Valves	3
Nozzle Valves	3
Flange Ball Valves, Bolt Connection	4
Ratchet Return Ball Valve	4
Locking Hasp Kits	4
Single Union Polypropylene Ball Valves	5
3-Way, Multi-Port Polypropylene Ball Valves	5
Manifold Ball Valve System	6-7
Stainless Steel Ball Valves	8
Brass Ball Valves	8

## Strainers

T-Line Strainers	9
Standard Y-Strainers (LSY Series)	9
Heavy Duty, High Capacity Y-Strainers	10
Quick Clean, High Capacity Y-Strainers	11
Suction Strainers	12

## Couplers and Adapters

Nylon, Glass-Filled	13
Polypropylene, Glass-Filled	14
Polypropylene, Heavy-Duty	15
Food Grade Polypropylene, Glass-Filled	16
Polyvinylidene Fluoride (PVDF)	17
Stainless Steel	18
Brass Couplers	19
PVC	19
Elbows, Polypropylene, Glass-Filled	20
Santoprene Dust Caps and Plugs	21
Lanyards	21

## Hose Fittings

Hose Nipples	22
Elbow Fittings	23
Schedule 80 Fittings, Polypropylene	24-25
Garden Hose Fittings	26
Extenders	26

## Tank Fittings and Accessories

Bolted Tank Fittings	27
Bulkhead Fittings, Polypropylene	28
Tank Accessories	29

<b>Sprayer Components</b>	30-31
---------------------------	-------

<b>Gaskets</b>	32-33
----------------	-------

<b>Clamps</b>	34-35
---------------	-------

<b>Gauges</b>	36-37
---------------	-------

## Pipe, Hose and Nozzle Fittings:

### Nylon and Glass-Filled Polypropylene

Adapters	38-41
Caps	42
Crosses	42
Couplings	43
Elbows	44-48
Fittings	48
Menders	49
Nipples	50
Nuts	51
Washers and Screen	52, 55
Pipe Plug	52
Reducer Bushings	53
Tees	53-55

<b>Push-In Tube Fittings</b>	56
------------------------------	----

Adapters	57
Connectors	57
Dividers	57-58
Elbows	58
Plugs	58
Reducers	59
Tees	59
Unions	59

<b>Quick Coupling Connectors</b>	60
----------------------------------	----

Plugs, Elbow	61
Plugs, In-Line	61-62
Plugs, Male Thread	62-63
Sockets, Elbow	63
Sockets, In-Line	63-64
Sockets, Male Thread	65

<b>Sealant</b>	66
----------------	----

<b>Replacement Parts</b>	67-72
--------------------------	-------

<b>Material Quick Reference</b>	73
---------------------------------	----

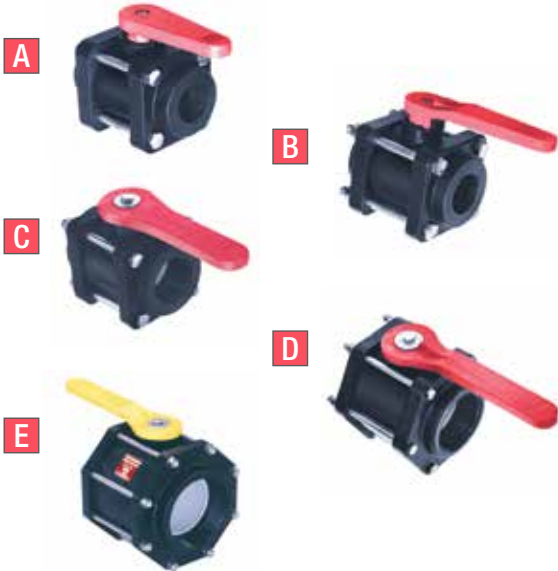
<b>Basic Chemical Resistance Table</b>	74-76
--	-------

# BOLTED POLYPROPYLENE BALL VALVES

## FEATURES

- Precision molded in glass-reinforced polypropylene for stability, strength and toughness
- Machined surfaces for easy on-off operation
- Self-aligning ball
- Viton® O-ring
- Excellent chemical resistance
- Poly-Tef seats
- Can be replaced or repaired in the field in-line (1/2" - 3" SP)
- Stainless steel hardware is available on all ball valves. Contact sales office for specific part numbers

## BOLTED POLYPROPYLENE BALL VALVES



ITEM	SIZE	DESCRIPTION	PART NO.	PSI
A	1/2"	Full Port	4011A-20	125 psi max @ 70°F
A	3/4"	Full Port	4011B-20	125 psi max @ 70°F
A	1"	Std Port	4011C-20	125 psi max @ 70°F
B	1"	Full Port	*4012Y-20	125 psi max @ 70°F
C	1-1/4"	Full Port	4011X-20	100 psi max @ 70°F
C	1-1/2"	Full Port	4011D-20	100 psi max @ 70°F
C	2"	Std Port	4011E-20	100 psi max @ 70°F
D	2"	Full Port	4011N-20	100 psi max @ 70°F
D	2-1/2"	Full Port	4011W-20	75 psi max @ 70°F
D	3"	Std Port	4011F-20	75 psi max @ 70°F
D	3"	Full Port	*4012Z-20	75 psi max @ 70°F
E	4"	Full Port	*7012A-20	75 psi max @ 70°F

Replacement parts can be found on pages 67-69

\* Only available with stainless steel hardware

## 2" BALL VALVES - FACTORY ASSEMBLED OPTIONS

## FEATURES

- Full combination of threaded and adapter ends
- Molded-in threaded nipples and adapters
- Also available with stainless steel hardware
- Operating pressure:
  - 100 psi max @ 70°F
  - 75 psi max @ 150°F



## 2" BOLTED BALL VALVE

ITEM	SIZE	DESCRIPTION	PART NO.
A	2"	Full Port, MPT x FPT	60112-A
C	2"	Full Port, MPT x Male Adapter	60112-C
D	2"	Full Port, FPT x Male Adapter	60112-D

Replacement parts can be found on page 69

# 2" COMPACT POLYPROPYLENE BOLTED BALL VALVES

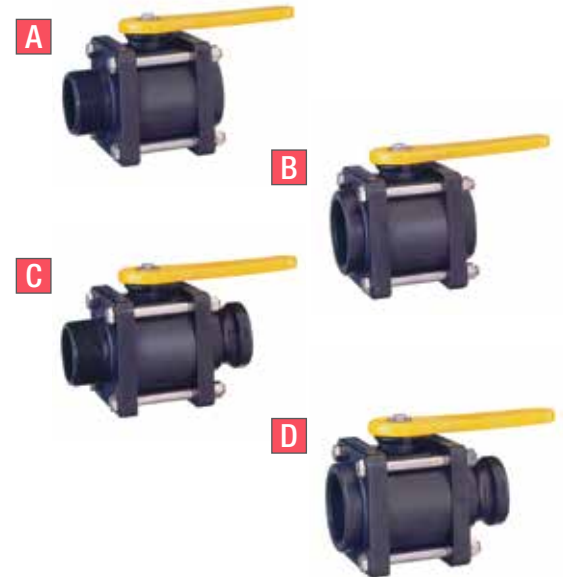
## FEATURES

- Compact size
- Stainless steel hardware
- Four-bolt design
- Lightweight
- Glass-reinforced polypropylene
- Four design options
- All Teflon® seats
- Viton® O-Rings
- Operating pressure:  
125 psi max @ 70°F  
70 psi max @ 150°F

## COMPACT BALL VALVE OPTIONS

ITEM	SIZE	DESCRIPTION	PART NO.
A	2"	Full Port, MPT x FPT	30112-A
B	2"	Full Port, FPT x FPT	30112-B
C	2"	Full Port, MPT x M Adapter	30112-C
D	2"	Full Port, FPT x M Adapter	30112-D

Replacement parts can be found on page 70



## NOZZLE VALVES 1-1/2" & 2"

## FEATURES

- Convenient transfer of liquids
- Lightweight hose-end valve
- 8" long polypropylene fill spout
- Also available with stainless steel hardware
- Operating pressure:  
100 psi max @ 70°F

## NOZZLE VALVE OPTIONS

ITEM	SIZE	DESCRIPTION	PART NO.
A	1-1/2"	Full Port w/Nozzle	4011K-20
A	2"	Standard Port w/Nozzle	4011L-20
B	2"	Full Port w/Nozzle	4011P-20

Replacement parts can be found on pages 69-70



# FLANGE BALL VALVES, BOLT CONNECTION 2-1/2" & 3"

## FEATURES

- Single and double flange designs
- ANSI standards 4-bolt, low pressure flange
- Also available with stainless steel hardware
- Operating pressure: 75 psi max @ 70°F



## FLANGE VALVE OPTIONS

ITEM	SIZE	DESCRIPTION	PART NO.
A	2-1/2"	Full Port, w/4-bolt 3" ANSI flange one end	6011W-20
A	3"	Std Port, w/4-Bolt 3" ANSI flange one end	6011F-20
B	3"	Std Port, w/4-Bolt 3" ANSI flange both end	4011M-20
B	Handle	Metal Handle for ANSI Flange Valve	4L105
	2-1/2", 3"	4-bolt 3" ANSI flange end cap	4E110-00

Ball Valve replacement parts can be found on page 69

# RATCHET RETURN BALL VALVE

## FEATURES

- Manufactured to exacting standards
- Designed for hard to reach applications (using rods or cables)
- Full "on" or "off"
- Fast actuating
- Stainless steel operating mechanism
- 1-1/4", 1-1/2", and 2" end cap options
- Operating pressure: 125 psi max @ 70°F
- All valves come with stainless steel hardware



## RATCHET RETURN VALVE OPTIONS

SIZE	DESCRIPTION	PART NO.
1-1/4"	Full Port	4012T-20
1-1/2"	Full Port	4012U-20
2"	Standard Port	4012V-20

Ball Valve replacement parts can be found on page 69-70

# LOCKING HASP KITS

## FEATURES

- Plated hardware
- Heavy duty
- Easy to install
- Locks valve open or close



## LOCKING HASP KITS

SIZE	DESCRIPTION	PART NO.
A	1-1/4", 1-1/2" FP & 2" SP	4020A-00
B	2" FP	4020B-00
B	2-1/2" FP & 3" SP	4020C-00

Note: When ordered with valve locking hasp kit will be installed on valves free of charge. Lock not included.

# SINGLE UNION POLYPROPYLENE BALL VALVES

## FEATURES

- Manufactured from polypropylene
- EPDM O-rings (Viton® kits available)
- Teflon® seats
- All valves 100% pressure tested
- Operating Pressure: 125 psi max @ 70°F

## SINGLE UNION POLY-BALL VALVE OPTIONS

ITEM	SIZE	DESCRIPTION	PART NO.
A	1/2"	Full Port	SU050-FP
A	3/4"	Full Port	SU075-FP
A	1"	Full Port	SU100-FP
B	1" Nozzle	FP, 45 Degree Nozzle Valve	SU100-FP-NOZ
A	1-1/4"	Full Port	SU125-FP
A	1-1/2"	Full Port	SU150-FP
A	2"	Full Port	SU200-FP
A	3"	Full Port	SU300-FP

Replacement parts can be found on page 70



# 3-WAY, MULTI-PORT POLYPROPYLENE BALL VALVES

## FEATURES

- Manufactured from polypropylene
- EPDM O-rings (Viton® kits available)
- All valves 100% pressure tested
- Teflon® seats
- Operating pressure: 125 psi max @ 70°F
- Three position settings:
  - 1) bottom-to-right
  - 2) bottom-to-left
  - 3) off

## MULTI-PORT BALL VALVE OPTIONS

ITEM	SIZE	DESCRIPTION	PART NO.
A	3/4"	True Union, Full Port	MPBV075-FP
B	2"	Single-Union, Standard Port	MPBV200-SP



# MANIFOLD BALL VALVE SYSTEM

## FEATURES

- Clamp connection—no threading or rotating
- Quick and easy assembly. No pipe tape or sealant necessary
- Positive seals
- Easy on/off connections
- 360 degree orientation
- Valves and fittings are manufactured from glass-reinforced polypropylene for strength and durability
- Will not rust or corrode



## MANIFOLD BOLTED POLYPROPYLENE BALL VALVES

### FEATURES

- Self-aligning ball rotates freely against Teflon® seats
- Unique body-to-flange design allows for low torque on/off operations
- EPDM O-rings with Viton® O-ring stem seal
- All valves 100% tested
- Operating Pressure:  
1" to 2" – 150 psi max @ 70°F  
3" – 125 psi max @ 70°F



### FLANGE BALL VALVE OPTIONS

SIZE	DESCRIPTION	PART NO.
1"	Full Port, Clamp Connection	63028
2"	Full Port, Clamp Connection	63123
3"	Full Port, Clamp Connection	63125

## WORM GEAR FLANGE FITTING CLAMPS

### FEATURES

- Designed for use with flange valves and flange fittings
- Stainless steel construction



### FLANGE CLAMP SIZES

SIZE	DESCRIPTION	PART NO.
1"	Worm Gear	62932
2"	Worm Gear	62933
3"	Worm Gear	62934

### MANIFOLD FLANGE GASKETS (EPDM)

SIZE	DESCRIPTION	PART NO.
1"	Gasket	62935
2"	Gasket	61574
3"	Gasket	61575



## FEATURES

- Quick and easy assembly. No pipe tape or sealant necessary
- Positive seals
- Easy on/off connections

- 360 degree orientation
- Valves and fittings are manufactured from glass-reinforced polypropylene for strength and durability
- Will not rust or corrode

## FLANGE FITTINGS

ITEM	SIZE	DESCRIPTION	PART NO.
A	1"	Coupling, Flange	62914
A	2"	Coupling, Flange	63102
A	3"	Coupling, Flange	63113
B	1"	Cross, Flange	62923
B	2"	Cross, Flange	63109
B	3"	Cross, Flange	63119
C	1"	Elbow, Flange	62913
C	2"	Elbow, Flange	63101
C	3"	Elbow, Flange	63112
D	1" x 3/4"	Elbow, Flange x HB	62920
D	1" x 1"	Elbow, Flange x HB	62921
D	1" x 1-1/4"	Elbow, Flange x HB	62922
D	2" x 1-1/2"	Elbow, Flange x HB	63107
D	2" x 2"	Elbow, Flange x HB	63108
D	3" x 2"	Elbow, Flange x HB	63117
D	3" x 3"	Elbow, Flange x HB	63118
E	1" x 1"	Flange x FPT	62916
E	2" x 2"	Flange x FPT	63104
F	1" x 3/4"	Flange x HB	62917
F	1" x 1"	Flange x HB	62918
F	1" x 1-1/4"	Flange x HB	62919
F	2" x 1-1/2"	Flange x HB	63105
F	2" x 2"	Flange x HB	63106
F	3" x 2"	Flange x HB	63115
F	3" x 3"	Flange x HB	63116
G	2" x 2"	Flange x Male Coupler	62926
G	3" x 3"	Flange x Male Coupler	63121
H	1" x 3/4"	Flange x MPT	63098
H	1" x 1"	Flange x MPT	62915
H	1" x 1-1/4"	Flange x MPT	63099
H	2" x 2"	Flange x MPT	63103
H	3" x 3"	Flange x MPT	63114
I	1" x 1"	Plug, Flange	62924
I	2" x 2"	Plug, Flange	63110
I	3" x 3"	Plug, Flange	63120
J	1" w/ 1/4" FPT	Plug, Flange w/FPT	62925
K	2" x 1"	Reducing Coupling, Flange x Flange	62927
K	3" x 2"	Reducing Coupling, Flange x Flange	62928
L	1"	Tee, Flange	62912
L	2"	Tee, Flange	63100
L	3"	Tee, Flange	63111

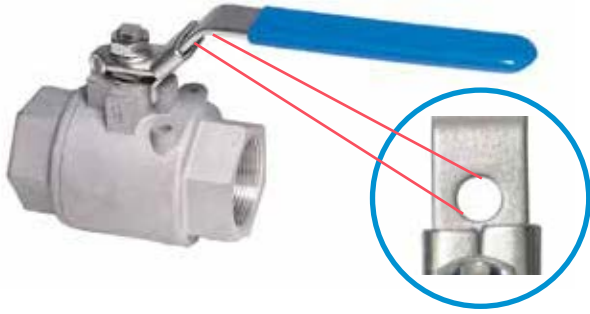


Recommended operating pressure  
 100 psi @ 0°F  
 125 psi @ 70°F  
 70 psi @ 150°F

# STAINLESS STEEL BALL VALVES

## FEATURES

- Manufactured from 316 stainless steel
- Full port construction
- Water, oil and gas rated @ 1,000 psi
- Latch lock handle performs in both open and closed positions
- Teflon® seats and seals
- Polished stainless steel ball for precise operation
- All valves 100% pressure tested
- Lockable handle available



## SS BALL VALVE OPTIONS

SIZE	DESCRIPTION	PART NO.
3/8"	Full Port	VSS038
1/2"	Full Port	VSS050
3/4"	Full Port	VSS075
1"	Full Port	VSS100
1-1/4"	Full Port	VSS125
1-1/2"	Full Port	VSS150
2"	Full Port	VSS200
3"	Full Port	VSS300

# BRASS BALL VALVES

## FEATURES

- Full port construction
- Water, oil and gas rated @ 600 psi WOG
- Lockable handle available
- Teflon® seats and seals
- All valves 100% pressure tested



Note: Valve pictured without handle lock

## BRASS BALL VALVE OPTIONS

SIZE	DESCRIPTION	PART NO.
1/4"	Full Port	BBV025
3/8"	Full Port	BBV038
1/2"	Full Port	BBV050
3/4"	Full Port	BBV075
1"	Full Port	BBV100
1-1/4"	Full Port	BBV125
1-1/2"	Full Port	BBV150
2"	Full Port	BBV200

## FEATURES

- Polypropylene body
- 304 stainless steel screens
- EPDM gaskets standard
- 20 mesh screen standard
- Operating pressure:  
100 psi max @ 70°F

## REPLACEMENT SCREENS

DESCRIPTION	PART NO.
Gasket (O-Ring)	4G537-00
20 Mesh Screen	4S512-20
40 Mesh Screen	4S512-40
80 Mesh Screen	4S512-80



## T-LINE POLYPROPYLENE STRAINERS

SIZE	MESH	PART NO.
1/2"	20, 40, 80	LST050
3/4"	20, 40, 80	LST075
1"	20, 40, 80	LST100

Please specify stainless steel mesh (20, 40, 80)

# STANDARD Y-STRAINERS (LSY SERIES)

## FEATURES

- Glass-reinforced polypropylene body & cap
- Sizes from 1/2" to 2"
- 304 stainless steel screens
- 20 mesh screen standard
- EPDM gaskets standard
- Easy access for cleaning
- Operating pressure:  
90 psi max @ 70°F

## REPLACEMENT SCREENS

DESCRIPTION	PART NO.
<b>1/2" - 3/4" Strainers</b>	
Gasket (O-Ring)	4G452-00
20 Mesh Screen	4S509-20
40 Mesh Screen	4S509-40
80 Mesh Screen	4S509-80
<b>1" - 1-1/4" Strainers</b>	
Gasket (O-Ring)	4G750-00
20 Mesh Screen	4S510-20
40 Mesh Screen	4S510-40
80 Mesh Screen	4S510-80
<b>1-1/2" - 2" Strainers</b>	
Gasket (O-Ring)	4G561-00
12 Mesh Screen	4S511-12
20 Mesh Screen	4S511-20
40 Mesh Screen	4S511-40
80 Mesh Screen	4S511-80



## STANDARD Y-STRAINERS

SIZE	MESH	PART NO.
1/2"	20, 40, 80	LSY050
3/4"	20, 40, 80	LSY075
1"	20, 40, 80	LSY100
1-1/4"	20, 40, 80	LSY125
1-1/2"	12, 20, 40, 80	LSY150
2"	12, 20, 40, 80	LSY200

Please specify stainless steel mesh (12, 20, 40, 80)  
Replacement parts can be found on page 71

# 1-1/2" & 2" HEAVY DUTY, HIGH CAPACITY Y-STRAINERS

## FEATURES

- Glass-reinforced polypropylene body & cap
- 5" long full-flow screen
- 316 stainless steel screens
- Easy access for cleaning
- EPDM gaskets standard
- Viton® O-ring seals
- Operating pressure: 100 psi max @ 70°F



## REPLACEMENT SCREENS 5"

### Y-STRAINERS—HIGH CAPACITY

SIZE	MESH	PART NO.
1-1/2"	14, 20, 40, 80, 100	4187A
2"	14, 20, 40, 80, 100	4187B

DESCRIPTION	PART NO.
14 Mesh Screen	4S501
20 Mesh Screen	4S505
40 Mesh Screen	4S502
80 Mesh Screen	4S503
100 Mesh Screen	4S504

Please specify stainless steel mesh (14, 20, 40, 80, 100)  
Replacement parts can be found on page 72

# 3" HEAVY DUTY, HIGH CAPACITY Y-STRAINERS

## FEATURES

- Heavy duty, glass-reinforced polypropylene
- Extra large 304 stainless steel screens-reinforced with polypropylene
- Screens available in 6, 12, 20, 40 and 80 mesh
- EPDM gaskets standard
- 1/2" drain plug in bottom of cap
- Operating pressure: 75 psi max @ 70°F
- 20 mesh screen standard



## REPLACEMENT SCREENS 9-1/2"

### HEAVY DUTY, HIGH CAPACITY Y-STRAINER

DESCRIPTION	MESH	PART NO.
3" Y-Strainer	6, 12, 20, 40, 80	300A

DESCRIPTION	PART NO.
6 Mesh Screen	4S513-6
12 Mesh Screen	4S513-12
20 Mesh Screen	4S513-20
40 Mesh Screen	4S513-40
80 Mesh Screen	4S513-80

Please specify stainless steel mesh (6, 12, 20, 40, 80)  
Replacement parts can be found on page 72

# 2" QUICK CLEAN, HIGH CAPACITY Y-STRAINERS

## FEATURES

- Heavy duty glass-reinforced polypropylene
- 3" cam lever cap for easy cleaning
- 316 stainless steel screen
- 8" long full-flow screen
- Viton® O-ring
- EPDM gaskets standard
- Operating pressure: 100 psi max @ 70°F
- 14 mesh screen standard



## REPLACEMENT SCREENS

DESCRIPTION	PART NO.
6 Mesh Screen	4S508-6
14 Mesh Screen	4S508-14
30 Mesh Screen	4S508-30
40 Mesh Screen	4S508-40
80 Mesh Screen	4S508-80



## QUICK CLEAN, HIGH CAPACITY POLY Y-STRAINER

DESCRIPTION	MESH	PART NO.
2" Y-Strainer	6, 14, 30, 40, 80	200A

Please specify stainless steel mesh (6, 14, 30, 40, 80)  
Replacement parts can be found on page 72

# 3" QUICK CLEAN, HIGH CAPACITY Y-STRAINERS

## FEATURES

- 4" heavy duty polypropylene dust cap with three stainless steel handles
- Easy cleaning
- Heavy duty, glass-reinforced polypropylene body
- 316 stainless steel screens - available in 1/16" or 1/8" perf
- EPDM gaskets standard
- Operating pressure: 75 psi max @ 70°F
- Specify stainless steel perf (1/16", 1/8")



## REPLACEMENT SCREENS

DESCRIPTION	PART NO.
1/16" Perf Screen	4S514-062
1/8" Perf Screen	4S514-125



## QUICK CLEAN, HIGH CAPACITY POLY Y-STRAINER

SIZE	DESCRIPTION	PART NO.
3"	3" Y-Strainer w/4" Dust Cap	300A-ADC

Replacement parts can be found on page 72



# SUCTION STRAINERS

## ROUND-HOLE ZINC-PLATED STEEL STRAINERS

### FEATURES

- Spot-welded strong 16 gauge steel
- Zinc plated
- NPT Connection
- 50% strainer passage area
- Available in 1-1/2" and 2" connections
- Other sizes and configurations available—inquire



## ROUND-HOLE ZINC-PLATED STEEL STRAINERS

SIZE	DESCRIPTION	PART NO.
1-1/2" NPT	4" x 5" w/.375" holes	150SZ-0375 RD
2" NPT	4" x 5" w/.375" holes	200SZ-0375 RD

## SLOTTED POLYETHYLENE STRAINERS

### FEATURES

- Strong, high-density polyethylene
- Lightweight
- Available in three standard sizes: 1-1/2", 2" and 3"
- NPT Connection
- Large open area-high capacity
- Long life, won't rust
- Versatile, can be used in salt water and with most acids and chemicals



## SLOTTED POLYETHYLENE STRAINERS

SIZE	DESCRIPTION	PART NO.
1-1/2" NPT	3.5" x 5" w/.25" x 1" Holes	150SP
2" NPT	3.5" x 5" w/.25" x 1" Holes	200SP
3" NPT	5" x 7" w/.5" x 1.5" Holes	300SP



Designed for use with centrifugal pumps. Strainers filter out large damaging debris while permitting ample water passage to keep pumps functioning at full capacity.

Strainer baskets can also be used as attachments to outlet pipes, such as exhausting pipes, as barriers to birds and small animals.



# NYLON, GLASS-FILLED, COUPLERS AND ADAPTERS

## FEATURES

- Safety latches available on all couplers and dust caps ranging in size from 1-1/4" to 4"
- Lightweight-1/2 the weight of aluminum
- Strong—resists cross threading, thread seizure and “out-of-round” condition
- Chemical resistant to most acids (Refer to chemical resistance table for specific recommendation)
- Non-conducting
- All couplers feature stainless steel handles & pins, blue nylon handles available
- Interchangeable with other couplers and adapters manufactured to MIL-spec
- EPDM gaskets furnished standard. Buna-N, Viton® and Nitrile also available
- Temperature range under normal conditions -30°F to 200°F



## NYLON, GLASS-FILLED, COUPLERS & ADAPTERS

Replacement parts can be found on page 67

ITEM	DESCRIPTION	1/4"	3/8"	1/2"	5/8"	3/4"	1"	1-1/4"	1-1/2"	2"	3"	4"
A	Male Adapter/Female Thread	025 A-N	037 A-N	050 A-N		075 A-N	100 A-N	125 A-N	150 A-N	200 A-N	300 A-N	400 A-N
B	Female Coupler/Male Thread			050 B-N		075 B-N	100 B-N	125 B-N	150 B-N	200 B-N	300 B-N	400 B-N
C	Female Coupler/Hose Shank*			050 C-N	062 C-N	075 C-N	100 C-N	125 C-N	150 C-N	200 C-N	300 C-N*	400 C-N**
D	Female Coupler/Female Thread	025 D-N	037 D-N	050 D-N		075 D-N	100 D-N	125 D-N	150 D-N	200 D-N	300 D-N	400 D-N
E	Male Adapter/Hose Shank			050 E-N	062 E-N	075 E-N	100 E-N	125 E-N	150 E-N	200 E-N	300 E-N	400 E-N
F	Male Adapter/Male Thread			050 F-N		075 F-N	100 F-N	125 F-N	150 F-N	200 F-N	300 F-N	400 F-N
DC	Female Coupler Cap					075 DC-N	100 DC-N		150 DC-N	200 DC-N	300 DC-N	400 DC-N
DP	Male Adapter Plug					075 DP-N	100 DP-N		150 DP-N	200 DP-N	300 DP-N	400 DP-N

\* 3" x 2-1/2" - 300250C-N  
\*\* 4" x 3" - 430C-N

\* Coupler/adapters in this group utilize a 3/4" coupler/adapter connection while maintaining the indicated hose connection size.

\*\* Coupler/adapters in this group utilize a 1-1/2" coupler/adapter connection while maintaining the indicated hose connection size.

**Size**  
1/4"-1"  
1-1/4"-2"  
3"  
4"

**Operating Pressure**  
175 psi max @ 70° F  
150 psi max @ 70° F  
100 psi max @ 70° F  
50 psi max @ 70° F

- On 1/4", 3/8", 1/2" & 5/8" sizes the coupler and adapter portion is to 3/4" standard.
- On 1-1/4" size the coupler and adapter is to 1-1/2" standard.
- British thread also available. Contact customer service.

**WARNING:** To prevent accidental opening fully engage and secure handles prior to pressurizing.



# POLYPROPYLENE COUPLERS AND ADAPTERS

## FEATURES

- Safety latches available on all couplers and dust caps ranging in size from 1-1/4" to 4"
- Chemical resistant to most acids (Refer to chemical resistance table for specific recommendation)
- Temperature range from 10°F to 180°F
- All couplers feature stainless steel handles & pins
- Interchangeable with other couplers and adapters manufactured to MIL-spec
- EPDM gaskets furnished standard. Buna-N, Viton® and Nitrile also available



## POLYPROPYLENE COUPLERS & ADAPTERS

Replacement parts can be found on page 67

ITEM	DESCRIPTION	1/4"	3/8"	1/2"	3/4"	1"	1-1/4"	1-1/2"	2"	3"	4"
A	Male Adapter/Female Thread	025 A-M	037 A-M	050 A-M	075 A-M	100 A-M	125 A-M	150 A-M	200 A-M	300 A-M	
B	Female Coupler/Male Thread			050 B-M	075 B-M	100 B-M	125 B-M	150 B-M	200 B-M	300 B-M	
C	Female Coupler/Hose Shank			050 C-M	075 C-M	100 C-M	125 C-M	150 C-M	200 C-M	300 C-M	
D	Female Coupler/Female Thread	025 D-M	037 D-M	050 D-M	075 D-M	100 D-M	125 D-M	150 D-M	200 D-M	300 D-M	
E	Male Adapter/Hose Shank			050 E-M	075 E-M	100 E-M	125 E-M	150 E-M	200 E-M	300 E-M	
F	Male Adapter/Male Thread			050 F-M	075 F-M	100 F-M	125 F-M	150 F-M	200 F-M	300 F-M	400 F-M
DC	Female Coupler Cap				075 DC-M	100 DC-M		150 DC-M	200 DC-M	300 DC-M	400 DC-M
DP	Male Adapter Plug				075 DP-M	100 DP-M		150 DP-M	200 DP-M	300 DP-M	400 DP-M

\* Coupler/adapters in this group utilize a 3/4" coupler/adaptor connection while maintaining the indicated hose connection size.

\*\* Coupler/adapters in this group utilize a 1-1/2" coupler/adaptor connection while maintaining the indicated hose connection size.

**Size**  
1/4"-1"  
1-1/4"-2"  
3"  
4"

**Operating Pressure**  
125 psi max @ 70° F  
100 psi max @ 70° F  
75 psi max @ 70° F  
35 psi max @ 70° F

- \* • On 1/4", 3/8" & 1/2" sizes the coupler and adapter portion is to 3/4" standard.
- \*\* • On 1-1/4" size the coupler and adapter is to 1-1/2" standard.
- British thread also available. Contact customer service.

**WARNING:** To prevent accidental opening fully engage and secure handles prior to pressurizing.



# HEAVY-DUTY POLYPROPYLENE COUPLERS AND ADAPTERS

## FEATURES

- Extra thick walls, extra strength
- Safety Latches available on all couplers ranging in size from 1-1/4" to 3" and dust caps from 1-1/4" to 4"
- Manufactured from glass-reinforced polypropylene for stability, strength and toughness
- All couplers feature stainless steel handles & pins
- EPDM gaskets furnished as standard. Buna-N, Viton® and Nitrile also available
- Interchangeable with other couplers and adapters manufactured to MIL-spec
- Chemical resistant to most acids (Refer to chemical resistance tables for specific recommendation)
- Temperature range from 10°F to 180°F



## HEAVY-DUTY POLYPROPYLENE COUPLERS & ADAPTERS

ITEM	DESCRIPTION	1/2"	3/4"	1"	1-1/4"	1-1/2"	2"	3"	4"
A	Male Adapter/Female Thread	050 A	075 A	100 A	125 A	150 A	200 A	300 A	400 A
B	Female Coupler/Male Thread	050 B	075 B	100 B	125 B	150 B	200 B	300 B	400 B
C	Female Coupler/Hose Shank	050 C	075 C	100 C	125 C	150 C	200 C	300 C	400 C
D	Female Coupler/Female Thread	050 D	075 D	100 D	125 D	150 D	200 D	300 D	400 D
E	Male Adapter/Hose Shank	050 E	075 E	100 E	125 E	150 E	200 E	300 E	400 E
F	Male Adapter/Male Thread	050 F	075 F	100 F	125 F	150 F	200 F	300 F	400 F
DC	Female Coupler Cap	050 DC	075 DC	100 DC	125 DC	150 DC	200 DC	300 DC	400 DC
DP	Male Adapter Plug	050 DP	075 DP	100 DP	125 DP	150 DP	200 DP	300 DP	400 DP

\* 4" Couplers have 3 cam handles

- British thread also available. Contact customer service.

### Size

1/2"-2"  
3"  
4"

### Operating Pressure

125 psi max @ 70° F  
100 psi max @ 70° F  
75 psi max @ 70° F

**WARNING:** To prevent accidental opening fully engage and secure handles prior to pressurizing.

Replacement parts can be found on page 67



# FOOD GRADE GLASS-FILLED POLYPROPYLENE COUPLERS AND ADAPTERS

## FEATURES

- Chemical Resistant to most acids (Refer to chemical resistance tables for specific recommendation)
- FDA / NSF compliant
- All couplers feature stainless steel handles & pins
- Interchangeable with other couplers and adapters manufactured to MIL-spec
- Nitrile gaskets furnished as standard. EPDM, Buna-N and Viton® also available
- Good mechanical strength
- Resistance to alkalies, salts and alcohols
- Resistance to animal, vegetable and mineral oils
- Resistance to phosphoric and hydrochloric acids
- Temperature range under normal conditions from 10°F to 180°F



## FOOD GRADE GLASS-FILLED POLYPROPYLENE COUPLERS & ADAPTERS

ITEM	DESCRIPTION	1/4"	3/8"	1/2"	3/4"	1"	1-1/4"	1-1/2"	2"	3"
A	Male Adapter/Female Thread				075 A-F	100 A-F		150 A-F	200 A-F	300 A-F
B	Female Coupler/Male Thread				075 B-F	100 B-F		150 B-F	200 B-F	300 B-F
C	Female Coupler/Hose Shank		AVAILABLE AS SPECIAL ORDER ONLY		075 C-F	100 C-F	AVAILABLE AS SPECIAL ORDER ONLY	150 C-F	200 C-F	300 C-F
D	Female Coupler/Female Thread				075 D-F	100 D-F		150 D-F	200 D-F	300 D-F
E	Male Adapter/Hose Shank				075 E-F	100 E-F		150 E-F	200 E-F	300 E-F
F	Male Adapter/Male Thread				075 F-F	100 F-F		150 F-F	200 F-F	300 F-F
DC	Female Coupler Cap				075 DC-F	100 DC-F		150 DC-F	200 DC-F	300 DC-F
DP	Male Adapter Plug				075 DP-F	100 DP-F		150 DP-F	200 DP-F	300 DP-F

- On 1/4", 3/8" & 1/2" sizes the coupler and adapter portion is to 3/4" standard.
- On 1-1/4" size the coupler and adapter is to 1-1/2" standard.
- British thread also available. Contact customer service.

<b>Size</b>	<b>Operating Pressure</b>
1/4"-1"	125 psi max @ 70° F
1-1/4"-2"	100 psi max @ 70° F
3"	50 psi max @ 70° F

**WARNING:** To prevent accidental opening fully engage and secure handles prior to pressurizing.

Replacement parts can be found on page 67

# POLYVINYLIDENE FLUORIDE (PVDF) COUPLERS AND ADAPTERS

## FEATURES

- Chemical Resistant to most acids (Refer to chemical resistance tables for specific recommendation)
- Interchangeable with other couplers and adapters manufactured to MIL-spec
- EPDM gaskets furnished as standard. Buna-N, Viton® and Nitrile also available
- All couplers feature stainless steel handles & pins
- Nonflammable and self-extinguishing
- UV stable in the visible spectrum
- NSF compliant
- Temperature range under normal conditions -20°F to 300°F



## POLYVINYLIDENE FLUORIDE (PVDF) COUPLERS & ADAPTERS

ITEM	DESCRIPTION	1/4"	3/8"	1/2"	3/4"	1"	1-1/2"	2"	3"
A	Male Adapter/Female Thread	025 A-V	037 A-V	050 A-V	075 A-V	100 A-V	150 A-V	200 A-V	300 A-V
B	Female Coupler/Male Thread			050 B-V	075 B-V	100 B-V	150 B-V	200 B-V	300 B-V
C	Female Coupler/Hose Shank			050 C-V	075 C-V	100 C-V	150 C-V	200 C-V	300 C-V
D	Female Coupler/Female Thread	025 D-V	037 D-V	050 D-V	075 D-V	100 D-V	150 D-V	200 D-V	300 D-V
E	Male Adapter/Hose Shank			050 E-V	075 E-V	100 E-V	150 E-V	200 E-V	300 E-V
F	Male Adapter/Male Thread			050 F-V	075 F-V	100 F-V	150 F-V	200 F-V	300 F-V
DC	Female Coupler Cap				075 DC-V	100 DC-V	150 DC-V	200 DC-V	300 DC-V
DP	Male Adapter Plug				075 DP-V	100 DP-V	150 DP-V	200 DP-V	300 DP-V

\* Coupler/adapters in this group utilize a 3/4" coupler/adaptor connection while maintaining the indicated hose connection size.

- On 1/4", 3/8" & 1/2" sizes the coupler and adapter portion is to 3/4" standard.
- British thread also available. Contact customer service.

### Size

1/4"-1"  
1-1/2"-2"  
3"

### Operating Pressure

125 psi max @ 70° F  
100 psi max @ 70° F  
75 psi max @ 70° F

**WARNING:** To prevent accidental opening fully engage and secure handles prior to pressurizing.

Replacement parts can be found on page 67



# STAINLESS STEEL COUPLERS AND ADAPTERS

## FEATURES

- Choice between 304 and 316 SS grades
- Stainless steel handles for extra strength
- Interchangeable with other couplers and adapters manufactured to MIL-spec
- Buna-N gaskets furnished standard. EPDM and Viton® also available
- Chemical resistant to most acids (Refer to chemical resistance table for specific recommendation)



## 304 STAINLESS STEEL COUPLERS & ADAPTERS

ITEM	DESCRIPTION	1/2"	3/4"	1"	1-1/4"	1-1/2"	2"	3"	4"
A	Male Adapter/Female Thread	050SS-A-4	075SS-A-4	100SS-A-4	125SS-A-4	150SS-A-4	200SS-A-4	300SS-A-4	400SS-A-4
B	Female Coupler/Male Thread	050SS-B-4	075SS-B-4	100SS-B-4	125SS-B-4	150SS-B-4	200SS-B-4	300SS-B-4	400SS-B-4
C	Female Coupler/Hose Shank	050SS-C-4	075SS-C-4	100SS-C-4	125SS-C-4	150SS-C-4	200SS-C-4	300SS-C-4	400SS-C-4
D	Female Coupler/Female Thread	050SS-D-4	075SS-D-4	100SS-D-4	125SS-D-4	150SS-D-4	200SS-D-4	300SS-D-4	400SS-D-4
E	Male Adapter/Hose Shank	050SS-E-4	075SS-E-4	100SS-E-4	125SS-E-4	150SS-E-4	200SS-E-4	300SS-E-4	400SS-E-4
F	Male Adapter/Male Thread	050SS-F-4	075SS-F-4	100SS-F-4	125SS-F-4	150SS-F-4	200SS-F-4	300SS-F-4	400SS-F-4
DC	Female Coupler Cap	050SS-DC-4	075SS-DC-4	100SS-DC-4	125SS-DC-4	150SS-DC-4	200SS-DC-4	300SS-DC-4	400SS-DC-4
DP	Male Adapter Plug	050SS-DP-4	075SS-DP-4	100SS-DP-4	125SS-DP-4	150SS-DP-4	200SS-DP-4	300SS-DP-4	400SS-DP-4

## 316 STAINLESS STEEL COUPLERS & ADAPTERS

ITEM	DESCRIPTION	1/2"	3/4"	1"	1-1/4"	1-1/2"	2"	3"	4"
A	Male Adapter/Female Thread	050SS-A	075SS-A	100SS-A	125SS-A	150SS-A	200SS-A	300SS-A	400SS-A
B	Female Coupler/Male Thread	050SS-B	075SS-B	100SS-B	125SS-B	150SS-B	200SS-B	300SS-B	400SS-B
C	Female Coupler/Hose Shank	050SS-C	075SS-C	100SS-C	125SS-C	150SS-C	200SS-C	300SS-C	400SS-C
D	Female Coupler/Female Thread	050SS-D	075SS-D	100SS-D	125SS-D	150SS-D	200SS-D	300SS-D	400SS-D
E	Male Adapter/Hose Shank	050SS-E	075SS-E	100SS-E	125SS-E	150SS-E	200SS-E	300SS-E	400SS-E
F	Male Adapter/Male Thread	050SS-F	075SS-F	100SS-F	125SS-F	150SS-F	200SS-F	300SS-F	400SS-F
DC	Female Coupler Cap	050SS-DC	075SS-DC	100SS-DC	125SS-DC	150SS-DC	200SS-DC	300SS-DC	400SS-DC
DP	Male Adapter Plug	050SS-DP	075SS-DP	100SS-DP	125SS-DP	150SS-DP	200SS-DP	300SS-DP	400SS-DP

**WARNING:** To prevent accidental opening fully engage and secure handles prior to pressurizing.

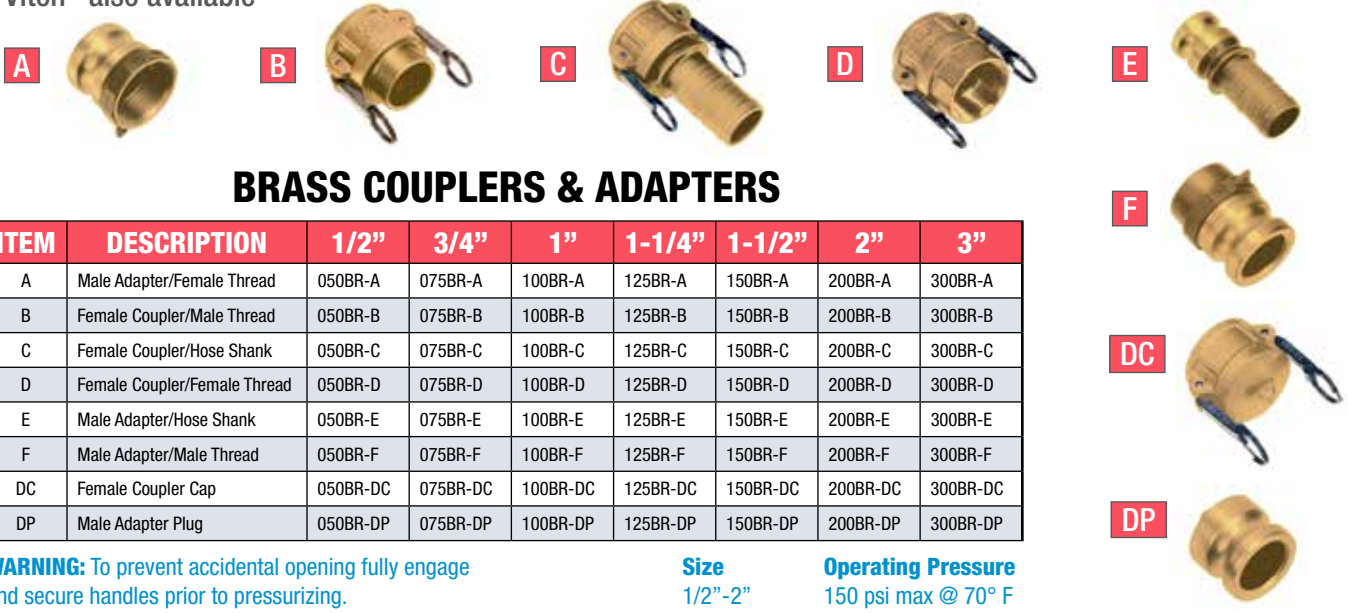
**Size**  
1/2"-2"  
3"  
4"

**Operating Pressure**  
250 psi max @ 70° F  
200 psi max @ 70° F  
150 psi max @ 70° F

# BRASS COUPLERS AND ADAPTERS

## FEATURES

- Interchangeable with other couplers and adapters manufactured to MIL-spec
- Buna-N gaskets furnished standard. EPDM and Viton® also available
- Chemical resistant to most acids (Refer to chemical resistance table for specific recommendation)



## BRASS COUPLERS & ADAPTERS

ITEM	DESCRIPTION	1/2"	3/4"	1"	1-1/4"	1-1/2"	2"	3"
A	Male Adapter/Female Thread	050BR-A	075BR-A	100BR-A	125BR-A	150BR-A	200BR-A	300BR-A
B	Female Coupler/Male Thread	050BR-B	075BR-B	100BR-B	125BR-B	150BR-B	200BR-B	300BR-B
C	Female Coupler/Hose Shank	050BR-C	075BR-C	100BR-C	125BR-C	150BR-C	200BR-C	300BR-C
D	Female Coupler/Female Thread	050BR-D	075BR-D	100BR-D	125BR-D	150BR-D	200BR-D	300BR-D
E	Male Adapter/Hose Shank	050BR-E	075BR-E	100BR-E	125BR-E	150BR-E	200BR-E	300BR-E
F	Male Adapter/Male Thread	050BR-F	075BR-F	100BR-F	125BR-F	150BR-F	200BR-F	300BR-F
DC	Female Coupler Cap	050BR-DC	075BR-DC	100BR-DC	125BR-DC	150BR-DC	200BR-DC	300BR-DC
DP	Male Adapter Plug	050BR-DP	075BR-DP	100BR-DP	125BR-DP	150BR-DP	200BR-DP	300BR-DP

**WARNING:** To prevent accidental opening fully engage and secure handles prior to pressurizing.

**Size**  
1/2"-2"  
3"

**Operating Pressure**  
150 psi max @ 70° F  
75 psi max @ 70° F

# PVC COUPLERS AND ADAPTERS

## FEATURES

- Use with PVC pipe
- Easy to install
- Socket solvent weld (cement)
- Stainless steel handles, rings & pins
- EPDM gaskets standard
- Economical
- Weather & corrosion resistant

### X STYLE, CAM ADAPTER (WITH SLIP FIT)

ITEM	DESCRIPTION	1/2"	3/4"	1"	1-1/4"	1-1/2"	2"	3"
X	X Style, Cam Adapter	050-X	075-X	100-X	125-X	150-X	200-X	300-X

### Y STYLE, CAM COUPLER (WITH SLIP FIT)

ITEM	DESCRIPTION	1/2"	3/4"	1"	1-1/4"	1-1/2"	2"	3"
Y	Y Style, Cam Coupler	050-Y	075-Y	100-Y	125-Y	150-Y	200-Y	300-Y

**WARNING:** To prevent accidental opening fully engage and secure handles prior to pressurizing.

**Size** 1/2"-2"  
**Operating Pressure**  
105 psi max @ 72° F  
90 psi max @ 80° F  
65 psi max @ 100° F  
25 psi max @ 140° F

**Size** 3"  
**Operating Pressure**  
75 psi max @ 72° F  
68 psi max @ 80° F  
50 psi max @ 100° F  
20 psi max @ 140° F



# POLYPROPYLENE ELBOW COUPLERS AND ADAPTERS

## FEATURES

- Manufactured from glass-reinforced polypropylene for stability, strength and toughness
- Chemical resistant to most acids (Refer to chemical resistance tables for specific recommendation)
- EPDM gaskets furnished as standard, Buna-N, Viton® and Nitrile also available
- Interchangeable with other couplers and adapters
- All couplers feature stainless steel handles, rings & pins
- Temperature range from 10°F to 180°F
- Safety latches available on all couplers



## POLYPROPYLENE ELBOW COUPLERS AND ADAPTERS

ITEM	SIZE	DESCRIPTION	PART NO.
A	2"	Adapter with Female Thread	200A-90
B	2"	Coupler with Male Thread	200B-90
C	2"	Coupler with Hose Shank	200C-90
D	2"	Coupler with Female Thread	200D-90
E	2"	Adapter with Hose Shank	200E-90
F	2"	Adapter with Male Thread	200F-90

90° cam couplers and adapters also available in Ny-Glass material – contact sales office for prices.

**Operating Pressure**  
125 psi max @ 70° F

**WARNING:** To prevent accidental opening fully engage and secure handles prior to pressurizing.

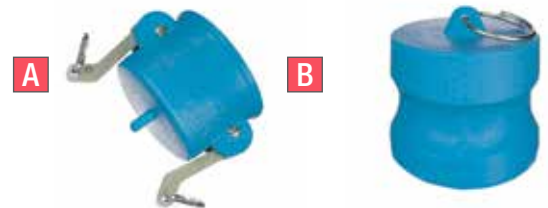
# SANTOPRENE DUST CAPS AND PLUGS

## FEATURES

- Use to cap off pipes, keeps interior clean and dry
- Does not hold pressure
- Low cost
- Color options available
- Stainless steel arms, pins and rings standard
- Protects mating fittings

## SANTOPRENE DUST CAPS AND PLUGS

ITEM	SIZE	DESCRIPTION	PART NO.
A	2"	Female Coupler Cap	200-DCS
A	3"	Female Coupler Cap	300-DCS
B	2"	Male Adapter Plug	200-DPS
B	3"	Male Adapter Plug	300-DPS



Operating pressure 0 psi. Designed to protect mating fittings from damage.

## LANYARDS

### SS SASH CHAIN LANYARD

#### FEATURES

- 302 stainless steel and corrosion-resistant lanyards are designed for industrial-duty use
- The chain is 0.035" thick, trade size #8
- The rings on either end are 1-3/4" O.D.
- The standard length is 11", other sizes available on request



### SS SASH CHAIN LANYARD

SIZE	DESCRIPTION	PART NO.
11" Ring-to-Ring	SS Sash Chain Lanyard	SSC-08

### NYLON COATED SS WIRE-ROPE LANYARD

#### FEATURES

- Wire rope lanyards are coated in black, non-conductive nylon, won't rust or interfere with sensitive equipment
- Lanyards are made from 1/16" 303/304 stainless steel wire rope
- The coated lanyard diameter is 3/32", with a crimped aluminum sleeve



### NYLON COATED SS WIRE-ROPE LANYARD

SIZE	DESCRIPTION	PART NO.
11" Loop-to-Loop	Nylon Coated SS Wire Rope	2183



# HOSE NIPPLES

## FEATURES

- Sizes 1/2" - 4"
- NPT x Hose Barb
- Available in five materials for a full range of applications



### GLASS-FILLED NYLON **A**

#### FEATURES

- Strong, lightweight
- Temperature range under normal conditions -30°F to 200°F

### GLASS-FILLED POLYPROPYLENE **B**

#### FEATURES

- Chemical resistant to most acids
- Temperature range under normal conditions 10°F to 180°F

### FOOD GRADE POLYPROPYLENE **C**

#### FEATURES

- FDA / NSF compliant
- Temperature range under normal conditions 10°F to 180°F

### POLYVINYLIDENE FLUORIDE (PVDF) **D**

#### FEATURES

- Strong and chemical resistant
- Contact customer service for FDA / NSF compliance
- Temperature range under normal conditions -20°F to 300°F

### 316 STAINLESS STEEL **E**

#### FEATURES

- Excellent chemical and corrosion resistance
- Use for food service and processing
- FDA/NSF Compliant
- Conductive

Note: Refer to chemical resistance table for more information p. 74

## HOSE NIPPLES

ITEM	DESCRIPTION	1/2"	3/4"	1"	1-1/4"	1-1/2"	2"	3"	4"
A	Glass-Filled Nylon	050 HN-N	075 HN-N	100 HN-N	125 HN-N	150 HN-N	200 HN-N	300 HN-N	400 HN-N
	Operating Pressure	175 psi max	175 psi max	175 psi max	150 psi max	150 psi max	150 psi max	100 psi max	50 psi max
B	Glass-Filled Poly	050 HN-M	075 HN-M	100 HN-M	125 HN-M	150 HN-M	200 HN-M	300 HN-M	400 HN-M
	Operating Pressure	125 psi max	125 psi max	125 psi max	100 psi max	100 psi max	100 psi max	75 psi max	50 psi max
C	Food Grade Poly	050 HN-F	075 HN-F	100 HN-F	125 HN-F	150 HN-F	200 HN-F	300 HN-F	
	Operating Pressure	125 psi max	125 psi max	125 psi max	100 psi max	100 psi max	100 psi max	50 psi max	
D	PVDF	050 HN-V	075 HN-V	100 HN-V	125 HN-V	150 HN-V	200 HN-V	300 HN-V	
	Operating Pressure	125 psi max	125 psi max	125 psi max	100 psi max	100 psi max	100 psi max	50 psi max	
E	316 Stainless Steel	050 HN-SS	075 HN-SS	100 HN-SS	125 HN-SS	150 HN-SS	200 HN-SS	300 HN-SS	400 HN-SS
	Operating Pressure	250 psi max	250 psi max	250 psi max	250 psi max	250 psi max	250 psi max	200 psi max	200 psi max

Various operating pressures given in table are at 70° F. However, maximum listed operating pressure must be adjusted to reflect hose manufacturers recommended temperatures and pressures.



## FEATURES – POLYPROPYLENE (BLACK)

- Precision molded
- Glass-reinforced polypropylene
- Interchangeable with standard cam lever couplings of all types
- Operating Pressure of 100 psi max @ 70°F

## FEATURES – NYLON (YELLOW)

- Strong, lightweight, glass reinforced
- Chemical resistant to most acids (refer to chemical resistance table for specific recommendation p. 74)
- Non-conducting
- Operating Pressure of 125 psi max @ 70°F

## ELBOW FITTINGS

ITEM	DESCRIPTION	3/4"	1-1/2"	2"
<b>A</b>	<b>Adapter x MPT</b>			
	Poly	50012		
	Nylon	50012N		
<b>B</b>	<b>Adapter x FPT</b>			
	Poly	50013		
	Nylon	50013N		
<b>C</b>	<b>MPT x FPT</b>			
	Poly	50016	60013	70011
	Nylon	50016N	60013N	70011N
<b>D</b>	<b>MPT x MPT</b>			
	Poly	50014	60014	70012
	Nylon	50014N	60014N	70012N
<b>E</b>	<b>MPT x Hose Shank</b>			
	Poly	50015	60011	70013
	Nylon	50015N	60011N	70013N
<b>F</b>	<b>MPT x MPT Long-Neck</b>			
	Poly	50017		
	Nylon	50017N		
<b>G</b>	<b>FPT x Hose Shank</b>			
	Poly		60015	
	Nylon		60015N	



# SCHEDULE 80 FITTINGS, POLYPROPYLENE

## FEATURES

- Schedule 80 design
- Manufactured from glass-reinforced polypropylene for strength and durability
- Chemical resistant to most acids (Refer to chemical resistance tables for specific recommendation)
- Temperature range 10°F to 180°F

### CAP



SIZE	PART NO.
1/2"	70901
3/4"	70872
1"	70873
1-1/4"	70902
1-1/2"	70874
2"	70875
3"	70876

### COUPLING



SIZE	PART NO.
3/8"	70903
1/2"	70877
3/4"	70878
1"	70879
1-1/4"	70880
1-1/2"	70881
2"	70882
3"	70883

### CROSS



SIZE	PART NO.
3/4"	70821
1"	70822
1-1/4"	70823
1-1/2"	70824
2"	70825

### NIPPLE



SIZE	PART NO.
3/8" x short	70894
1/2" x short	70826
1/2" x 3"	70827
3/4" x short	70828
3/4" x 4"	70829
3/4" x 6"	70830
1" x short	70831
1" x 4"	70832
1" x 6"	70833
1-1/4" x short	70834
1-1/4" x 4"	70835
1-1/4" x 6"	70836
1-1/2" x short	70837
1-1/2" x 4"	70838
1-1/2" x 6"	70839
2" x short	70840
2" x 4"	70841
2" x 6"	70842
3" x short	70843
3" x 6"	70844
4" x short	70895

### ELBOW, 90°



SIZE	PART NO.
3/8"	70892
1/2"	70807
3/4"	70808
1"	70809
1-1/4"	70810
1-1/2"	70811
2"	70812
3"	70813

#### Operating Pressure

120 psi max @ 0° F  
 150 psi max @ 70° F  
 80 psi max @ 150° F

# SCHEDULE 80 FITTINGS, POLYPROPYLENE

## PLUG



SIZE	PART NO.
1/2"	70884
3/4"	70885
1"	70886
1-1/4"	70887
1-1/2"	70888
2"	70889
3"	70890

## REDUCER BUSHING



SIZE	PART NO.
3/8" x 1/4"	70900
1/2" x 1/4"	70851
1/2" x 3/8"	70852
3/4" x 1/8"	70853
3/4" x 1/4"	70854
3/4" x 3/8"	70855
3/4" x 1/2"	70856
1" x 1/8"	70857
1" x 1/4"	70858
1" x 1/2"	70859
1" x 3/4"	70860
1-1/4" x 3/4"	70861
1-1/4" x 1"	70862
1-1/2" x 3/4"	70863
1-1/2" x 1"	70864
1-1/2" x 1-1/4"	70865
2" x 3/4"	70866
2" x 1"	70867
2" x 1-1/4"	70868
2" x 1-1/2"	70869
3" x 1-1/2"	70870
3" x 2"	70871

## REDUCER NIPPLE



SIZE	PART NO.
1/2" x 3/8"	70896
3/4" x 1/2"	70845
1" x 1/2"	70897
1" x 3/4"	70846
1-1/4" x 3/4"	70898
1-1/4" x 1"	70847
1-1/2" x 1"	70899
1-1/2" x 1-1/4"	70848
2" x 1-1/2"	70849
3" x 2"	70850
4" x 3"	72938

## STREET ELBOW, 45°



SIZE	PART NO.
3/4"	72907
1"	72908
1-1/4"	72909
1-1/2"	72910
2"	72911

## STREET ELBOW, 90°



SIZE	PART NO.
3/8"	70893
1/2"	70814
3/4"	70815
1"	70816
1-1/4"	70817
1-1/2"	70818
2"	70819
3"	70820

## TEE



SIZE	PART NO.
3/8"	70891
1/2"	70800
3/4"	70801
1"	70802
1-1/4"	70803
1-1/2"	70804
2"	70805
3"	70806



# GARDEN HOSE FITTINGS

## FEATURES

- (A-B) Couplers and Adapters are available in both glass-reinforced polypropylene and glass-reinforced nylon
- (C) Garden hose pump adapter made from glass-reinforced polypropylene for good, chemical resistance performance
- (D) Garden hose knurled cap available in both nylon and polypropylene materials
- (E) Washer – PVC vinyl material
- (F) Filter – stainless steel



## GARDEN HOSE FITTINGS

ITEM	SIZE	DESCRIPTION	PART NO.
A	3/4"	Male Adapter/Female GHT Poly	075A-MGHT
A	3/4"	Male Adapter/Female GHT Nylon	075A-NGHT
B	3/4"	Female Coupler/Male GHT Poly	075B-MGHT
B	3/4"	Female Coupler/Male GHT Nylon	075B-NGHT
C	3/4" x 1-1/4"	MHT x MPT Poly Pump Adapter	40011
D	3/4"	Nylon Knurled Cap	D-N34
D	3/4"	Polypro Knurled Cap	D-3N34
E	1" OD 11/16"	Washer, Vinyl	W406V
F	1" OD 58"	Filter, 30/30 SS Mesh	W160M

# EXTENDERS



## FEATURES

- Both reducing and riser extenders available
- Glass-reinforced polypropylene
- Excellent chemical resistance
- Temperature range 10°F to 180°F

## REDUCING EXTENDERS

ITEM	DESCRIPTION	1-1/4" x 1-1/2"	1-1/4" x 2"	1-1/2" x 1-1/4"	1-1/2" x 2"	2" x 1-1/4"	2" x 1-1/2"
A	FPT x MPT	40017	40015	40003	40016	40013	40004
A	British x MPT	40014	40018	40001	40019	40012	40002

## RISER EXTENDERS

ITEM	DESCRIPTION	1-1/4" x 1-1/4"	1-1/2" x 1-1/2"	2" x 2"
B	FPT x MPT	40008	40009	40010
B	British x MPT	40005	40006	40007

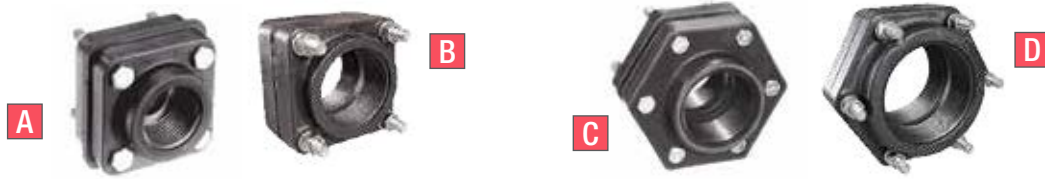
Also available in nylon and ABS.  
Please contact Customer Service.

**Operating Pressure**  
125 psi max @ 70° F

# BOLTED TANK FITTINGS, POLYPROPYLENE

## FEATURES

- Glass-reinforced polypropylene
- EPDM gaskets standard, Viton® available
- With or without recessed cap bolts
- Stainless steel bolts, washers, nuts



## POLYPROPYLENE BOLTED TANK FITTINGS

DESCRIPTION	1/2"	3/4"	1"	1-1/4"	1-1/2"	2"	2-1/2"	3"
Full Port	050-TF	075-TF	100F-TF	125-TF	150-TF	200F-TF	250-TF	
Item	A, B	A, B	A, B	A, B	A, B	C, D	C, D	
Rec Cap Bolt		075-TFC	100-TFC		150-TFC			
EPDM Gasket	24060-TF	24160-TF	24260-TF	24360-TF	24460-TF	24560FP-TF	24660-TF	
Viton Gasket	24060V-TF	24160V-TF	24260V-TF	24360V-TF	24460V-TF	24560FPV-TF	24660V-TF	
Standard Port			100-TF			200-TF		300-TF
Item			A, B			A, B		C, D
Rec Cap Bolt						200-TFC		300-TFC
EPDM Gasket			24260SP-TF			24560SP-TF		24760-TF
Viton Gasket			24260SPV-TF			24560SPV-TF		24760V-TF

Size	Operating Pressure
1/2"-1"	125 psi max @ 70° F
1-1/4"-2"	100 psi max @ 70° F
3"	75 psi max @ 70° F

# BOLTED TANK FITTINGS, STAINLESS STEEL

## FEATURES

- 316 stainless steel
- Bolts threaded into back plate
- Chemical resistant to most acids
- Full Port fittings from 1/2" to 4"
- Uses single gasket (not included) no welds or bolt holes to leak
- EPDM, cross-linked Polyethylene and Viton® gaskets available, see page 33

## BOLTED TANK FITTINGS, STAINLESS STEEL

BOLTS	SIZE	DESCRIPTION	PART NO.
4	1/2"	Bolt Drill Size: 11/32"; Hole Saw Size: 1-1/8"	63216
4	3/4"	Bolt Drill Size: 11/32"; Hole Saw Size: 1-3/8"	63035
4	1"	Bolt Drill Size: 11/32"; Hole Saw Size: 1-5/8"	62948
4	1-1/4"	Bolt Drill Size: 13/32"; Hole Saw Size: 2"	63036
4	1-1/2"	Bolt Drill Size: 13/32"; Hole Saw Size: 2-1/4"	63037
4	2"	Bolt Drill Size: 13/32"; Hole Saw Size: 2-5/8"	63038
6	3"	Bolt Drill Size: 13/32"; Hole Saw Size: 4-1/8"	63039
8	4"	Bolt Drill Size: 13/32"; Hole Saw Size: 5"	63688



NOTE: Gasket must be ordered separately. See page 33 for materials and part numbers. One (1) required.



# POLYPROPYLENE BULKHEAD FITTINGS

## FEATURES

- Heavy-duty bulkhead fitting
- Strong, glass-reinforced polypropylene
- Double threaded
- EPDM gaskets standard, Viton available
- Nut included



## POLYPROPYLENE BULKHEAD FITTINGS

ITEM	DOUBLE THREADED BULKHEAD FITTINGS W/NUT AND EPDM GASKET(S)	1/2"	3/4"	1"	1-1/4"	1-1/2"	2"	3"	4"
A	Bulkhead fitting w/nut and two (2) EPDM gaskets		60401	60427	60403	60124	60405	62299	62171
	Optional Viton gaskets		60360	60361	60361	60523	60523	60351	62786
	Recommended hole size		1-5/8"	2-1/4"	2-1/4"	3"	3"	4-1/2"	5-3/4"
AA	Anti-Vortex Adapter				62398		62399		
A	Heavy-duty bulkhead fitting w/nut and two (2) EPDM gaskets	62834	62798				63683		
	Optional Viton gaskets	60360	62800				60008		
	Recommended hole size	1-7/16"	1-5/8"				3-1/4"		
B	Anti-Vortex Fitting w/nut and two (2) EPDM gaskets				63065				
	Optional Viton gaskets				60361				
	Recommended hole size				2-1/4"				
C	Std Bulkhead fitting w/nut and one (1) EPDM gasket					63931	63481		
	Optional Viton gaskets					63939	60523		
	Recommended hole size					2-1/2"	3"		
	<b>Bulkhead w/Siphon Tube Kit, Nut and EPDM Gasket(s)</b>								
D	2" Heavy duty bulkhead fitting and short siphon tube						60337		
E	3" Bulkhead fitting, 2" reducer and short siphon tube							60339	

# TANK ACCESSORIES / CAPS / LIDS

## 12" SIPHON TUBE W/MPT

### FEATURES

- Heavy Duty
- Glass-filled polypropylene

DESCRIPTION	PART NO.
1-1/2" Siphon Tube	ST63279
2" Siphon Tube	ST63262
3" Siphon Tube	ST63263



## 2" MPT VENT CAP, POLYPROPYLENE

### FEATURES

- Anti-vortex
- Polypropylene

DESCRIPTION	PART NO.
2" MPT Cap, w/o screen	VC200
2" MPT Cap, w/poly screen	VC220



## PIPE CAP, POLYPROPYLENE

### FEATURES

- FPT
- Includes seat
- Polypropylene



DESCRIPTION	GASKET	PART NO.
2" FPT	Gasket - 200PL-G	200PC-M
3" FPT	Gasket - 300PL-G	300PC-M
4" FPT	Gasket - 400PL-G	400PC-M

## TANK LID, POLYETHYLENE

### FEATURES

- High density polyethylene
- Center vent
- Chemical resistant



DESCRIPTION	SIZE	PART NO.
Lid w/2" FPT	5"	TL63264
Lid w/Ball Check Air Vent	5"	TL63484
Lid w/Blue Snap-In Vent	8"	TL63480
Lid w/Blue Snap-In Vent	16"	TL63485

NOTE: Gaskets must be ordered separately. See page 32 for materials and part numbers.

## 2-1/2" WATER TANK CAP

### FEATURES

- Available in glass-filled polypropylene or nylon
- Includes 3-way 3/4" FPT



DESCRIPTION	SIZE	PART NO.
Water Tank Cap (Poly)	2-1/2"	MPW100
Water Tank Cap (Nylon)	2-1/2"	MNW100

Use with O-Ring 4H056, see page 33

## NEED ANOTHER CATALOG?



Contact Customer Service  
1-800-634-3078

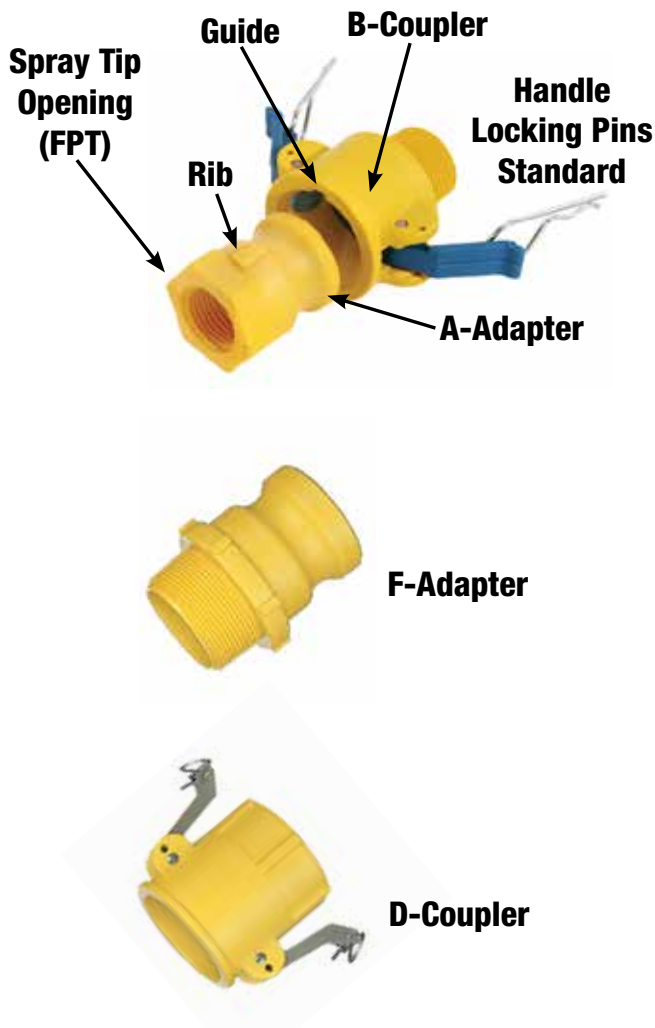


# SPRAYER COMPONENTS

## GUIDE LOCK SYSTEM

### FEATURES

- Guide-rib system provides simple nozzle angle repeatability
- Available in single and double self-aligning ribs
- Glass-reinforced Nylon, extra tough
- Fast, easy to use method for spray nozzle changes
- Strong long lasting threads—no cross-threading
- Coupler available in two sizes (3/4", 1") for typical spray boom mounting
- Male adapter available in four sizes (1/4", 3/8", 1/2", 3/4") fitting all spray nozzles
- Nylon and stainless steel handles available with locking pins
- EPDM gaskets standard on couplers
- Chemical resistant



Note: Other materials available, contact Sales Office.

## DOUBLE RIB GUIDE LOCK

### STYLE A - ADAPTER

MALE ADAPTER	SPRAY NOZZLE FPT	PART NO.
3/4"	1/4"	075A025-2GL-N
3/4"	3/8"	075A037-2GL-N
3/4"	1/2"	075A050-2GL-N
3/4"	3/4"	075A-2GL-N
1"	1/4"	100A025-2GL-N
1"	3/8"	100A037-2GL-N
1"	1/2"	100A050-2GL-N
1"	3/4"	100A075-2GL-N
1"	1"	100A-2GL-N

### STYLE B - COUPLER

FEMALE COUPLER	FEMALE THREAD	PART NO.
3/4"	3/4"	075B-2GL-N
1"	1"	100B-2GL-N

## SINGLE RIB GUIDE LOCK

### STYLE A - ADAPTER

MALE ADAPTER	SPRAY NOZZLE FPT	PART NO.
3/4"	1/4"	075A025-GL-N
3/4"	3/8"	075A037-GL-N
3/4"	1/2"	075A050-GL-N
3/4"	3/4"	075A-GL-N
1"	1/4"	100A025-GL-N
1"	3/4"	100A075-GL-N
1"	1"	100A-GL-N

### STYLE F - ADAPTER

MALE ADAPTER	MALE THREAD	PART NO.
3/4"	3/4"	075F-GL-N

### STYLE B - COUPLER

FEMALE COUPLER	MALE THREAD	PART NO.
3/4"	3/4"	075B-GL-N
1"	1"	100B-GL-N

### STYLE D - COUPLER

FEMALE COUPLER	FEMALE THREAD	PART NO.
3/4"	1/2"	075D050-GL-N
3/4"	3/4"	100D075-GL-N
1"	3/4"	100D075-GL-N



## NOZZLE TIPS

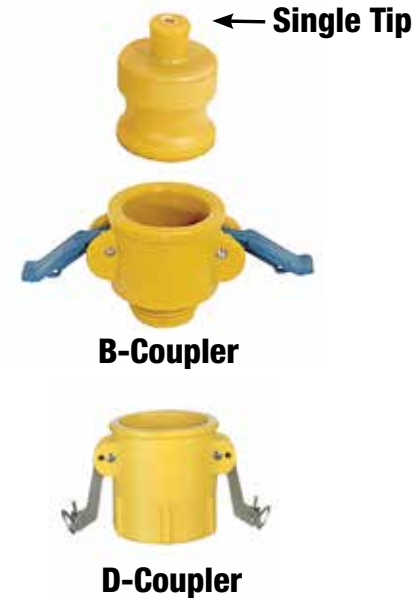
- Single or double nozzle tips available
- For Strip or Dribble nozzle applications
- Barb tip for use with 1/2" ID hose
- Glass-reinforced nylon for abrasion resistance and long life
- Imprinted nozzle size on tip for easy identification
- Compatible with all 3/4" B & D couplers

## SINGLE NOZZLE

Gallons per acre--water based on 20" spacing

Part Number	Nozzle Description	PSI	GPM per Nozzle	5 MPH	7.5 MPH	10 MPH	12.5 MPH	15 MPH
		10	1.5	89	59	45	36	30
075SJN-030	Orifice	20	2.0	118	79	59	48	40
	Dia. 9/64"	30	2.6	154	103	77	62	51
		40	3.0	178	119	89	71	59
075SJN-040	Orifice	10	2.0	118	79	59	48	40
	Dia. 5/32"	30	3.5	208	139	104	83	69
		40	4.0	238	158	119	95	79
075SJN-060	Orifice	10	3.0	179	119	89	71	59
	Dia. 3/16"	20	4.2	249	166	125	100	83
		30	5.2	309	206	154	124	103
075SJN-080	Orifice	40	6.0	356	238	178	143	119
	Dia. 7/32"	20	5.6	333	222	166	133	111
		30	6.9	410	273	205	164	136
075SJN-120	Orifice	40	8.0	475	317	238	190	158
	Dia. 1/4"	10	6.0	356	238	178	143	119
		20	8.5	505	337	252	202	168
075SJN-150	Orifice	30	10.4	618	412	309	247	206
	Dia. 19/64"	40	12.0	713	475	356	285	238
		10	7.5	446	297	223	178	149
075SJN-200	Orifice	20	10.6	630	420	314	252	210
	Dia. 21/64"	30	13.0	772	515	386	309	257
		40	15.0	891	594	446	356	297
075SJN-000	Orifice	10	10.0	594	396	297	238	198
	Dia. 21/64"	20	14.1	838	558	419	335	279
		30	17.3	1028	685	514	411	342
	40	20.0	1188	792	594	475	396	
075SJN-000	Blank Orifice	—	No Hole					

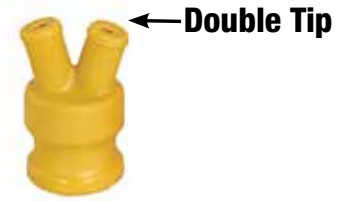
**Note:** Mount nozzles pointing downward and slightly toward rear of boom. Pressures of 10 to 30 psi are recommended narrowest banding.



## DOUBLE NOZZLE

Gallons per acre--water based on 60" spacing

Part Number	Nozzle Description	PSI	GPM per Nozzle	5 MPH	7.5 MPH	10 MPH	12.5 MPH	15 MPH
	Orifice	10	1.5	30	20	15	12	10
075DJN-015	Dia. 3/32"	20	2.1	42	28	21	17	14
		30	2.6	52	35	26	21	17
	Orifice	10	2.0	40	26	20	16	13
075DJN-020	Dia. 7/64"	20	2.8	56	37	28	22	19
		30	3.5	68	45	34	27	23
	Orifice	10	3.0	60	40	30	24	20
075DJN-030	Dia. 9/64"	20	4.2	84	56	42	34	28
		30	5.2	102	68	51	41	34
	Orifice	10	4.0	80	53	40	32	27
075DJN-040	Dia. 5/32"	20	5.7	112	75	56	45	38
		30	6.9	138	92	69	55	46
	Orifice	10	6.0	118	79	59	47	40
075DJN-060	Dia. 3/16"	20	8.5	168	112	84	67	56
		30	10.4	206	137	103	82	69
	Orifice	10	8.0	158	105	79	63	53
075DJN-080	Dia. 13/64"	20	11.3	224	149	112	90	75
		30	13.9	274	183	137	110	92
	Orifice	10	10.0	198	132	99	79	66
075DJN-100	Dia. 15/64"	20	14.1	280	187	140	112	94
		30	17.3	342	228	171	137	115
	075DJN-000	Blank Orifice	—	No Hole				



**Note:** Use double tip nozzle to convert a 60" spray boom to a 30" stripping boom for liquid strip application. The charts are based on water and require connection for the weight (specific gravity) of the spray product. A 56" boom height will give 30" strip spacing. The largest size that can be used with lower pressure settings helps to eliminate tip plugging.

Note: Nozzles can be ordered with other size orifice. Contact Sales Office.



# GASKETS

## FLANGE FITTINGS, ORIGINAL AND REPLACEMENT GASKETS



SIZE	MATERIAL	PART NO.
1"	EPDM	62935
2"	EPDM	61574
3"	EPDM	61575

## TANK LID GASKETS, ORIGINAL AND REPLACEMENT GASKETS



SIZE	MATERIAL	PART NO.
5"	EPDM	60366
16"	ETHAFOAM (PE)	62941

## BULKHEAD FITTINGS, REPLACEMENT GASKETS



SIZE	MATERIAL	PART NO.
1/2" - 3/4"	EPDM	60402
1" - 1-1/4"	EPDM	60404
1-1/2" - 2"	EPDM	60406
3"	EPDM	60331
4"	EPDM	62875
1/2" - 3/4"	Viton	60360
1" - 1-1/4"	Viton	60361
1-1/2" - 2"	Viton	60523
3"	Viton	60351
4"	Viton	62786

## CAM COUPLERS, REPLACEMENT GASKETS



SIZE	MATERIAL	PART NO.
1/2"	BUNA	24060B
3/4"	BUNA	24160B
1"	BUNA	24260B
1-1/4"	BUNA	24360B
1-1/2"	BUNA	24460B
2"	BUNA	24560B
3"	BUNA	24760B
4"	BUNA	24860B
1/2"	EPDM	24060
3/4"	EPDM	24160
1"	EPDM	24260
1-1/4"	EPDM	24360
1-1/2"	EPDM	24460
2"	EPDM	24560
3"	EPDM	24760
4"	EPDM	24860
1/2"	Nitrile	24060N
3/4"	Nitrile	24160N
1"	Nitrile	24260N
1-1/4"	Nitrile	24360N
1-1/2"	Nitrile	24460N
2"	Nitrile	24560N
3"	Nitrile	24760N
4"	Nitrile	24860N
1/2"	Viton	24060V
3/4"	Viton	24160V
1"	Viton	24260V
1-1/4"	Viton	24360V
1-1/2"	Viton	24460V
2"	Viton	24560V
3"	Viton	24760V
4"	Viton	24860V

## VINYL WASHER

- PVC Material
- For swivel & nozzle nuts



I.D.	O.D.	PART NO.
11/16" I.D.	1" O.D.	W406V

## BOLTED FULL PORT TANK FITTINGS, REPLACEMENT GASKETS



SIZE	MATERIAL	PART NO.
1/2"	EPDM	24060-TF
3/4"	EPDM	24160-TF
1"	EPDM	24260-TF
1-1/4"	EPDM	24360-TF
1-1/2"	EPDM	24460-TF
2"	EPDM	24560FP-TF
2-1/2"	EPDM	24660-TF
1/2"	Viton	24060V-TF
3/4"	Viton	24160V-TF
1"	Viton	24260V-TF
1-1/4"	Viton	24360V-TF
1-1/2"	Viton	24460V-TF
2"	Viton	24560FPV-TF
2-1/2"	Viton	24660V-TF

The 2" and 2-1/2" full port tank fittings require the six-hole gasket.

## STAINLESS STEEL BOLTED TANK FITTINGS, ORIGINAL AND REPLACEMENT GASKETS



SIZE	MATERIAL	PART NO.
3/4", 1"	Cross-Linked Polyethylene	62950
1-1/4", 1"	Cross-Linked Polyethylene	63041
1-1/2", 1"	Cross-Linked Polyethylene	63042
2", 1"	Cross-Linked Polyethylene	62848
3", 1"	Cross-Linked Polyethylene	63043
4", 1"	Cross-Linked Polyethylene	63689
3/4", 1"	EPDM	63205
1-1/4", 1-1/2"	EPDM	63426
2"	EPDM	63206
3"	EPDM	63223
4"	EPDM	63690
3/4", 1"	Viton	63224
1-1/4", 1-1/2", 2"	Viton	63225
3"	Viton	63226
4"	Viton	63691

## BOLTED STANDARD PORT TANK FITTINGS, REPLACEMENT GASKETS



SIZE	MATERIAL	PART NO.
2"	EPDM	24560SP-TF
3"	EPDM	24760-TF
2"	Viton	24560SPV-TF
3"	Viton	24760V-TF

## SHIMS (COUPLER COMPATIBLE)



SIZE	MATERIAL	PART NO.
3/4"	Polyethylene, 0.030" Thickness	075-GS
1"	Polyethylene, 0.030" Thickness	100-GS
1-1/2"	Polyethylene, 0.030" Thickness	150-GS
2"	Polyethylene, 0.030" Thickness	200-GS
3"	Polyethylene, 0.030" Thickness	300-GS
4"	Polyethylene, 0.030" Thickness	400-GS

\* Use under coupler gasket.

## WATER TANK CAP O-RING



THREAD	MATERIAL	PART NO.
2-1/2"	EPDM	4H056

# CLAMPS

## FLANGE FITTING CLAMPS, WORM GEAR

### FEATURES

- Designed for use with flange valves and flange fittings
- Stainless steel construction
- Easy on/off connections
- 360° position
- Positive seals



See page 7 for fittings, page 32 for gaskets

SIZE	PART NO.
1" Flange Fitting	62932
2" Flange Fitting	62933
3" Flange Fitting	62934

Notes: Maximum recommended torque 75 in.-lbs.  
Use with flange & manifold systems  
Installation torque 30-50 in.-lbs.

## T-BOLT CLAMPS

### FEATURES

- Manufactured from 304 stainless steel
- Strong, reliable positive connections
- Ideal for high torque applications
- 360° Sealing surface
- Stainless steel bolt with silver plated nut to prevent seizing
- Nylon insert lock-nut feature
- Band width 3/4"



SIZE RANGE	NOMINAL I.D.	PART NO.
1.625" - 1.812"	1.75"	43082000
1.75" - 1.937"	1.875"	43082002
1.875" - 2.062"	2"	43082004
2.25" - 2.737"	2.375"	43082008
2.343" - 2.625"	2.562"	43082012
2.531" - 2.812"	2.75"	43082016
2.906" - 3.187"	3.125"	43082020
3.281" - 3.562"	3.5"	43082024
3.531" - 3.812"	3.75"	43082026
4.281" - 4.562"	4.5"	43082030
4.531" - 4.812"	4.75"	43082032

Notes: Maximum recommended torque 75 in.-lbs.  
Other sizes available. Contact sales office.

## FEATURES

- SAE type “F” clamp
- 201 Stainless steel band and housing
- Full range of sizes, contact sales office for other sizes not listed below
- Screws available in 410 stainless steel or zinc plated carbon steel
- Suitable for most applications
- Hex head/slotted screws



**410 SS  
SCREW**



**ZINC PLATED  
SCREW**

SIZE RANGE	Part No.	SAE #	Part No.
0.25" - 0.63"	MM4 SS	4	MM4
0.31" - 0.91"	MM5 SS	6/8	MM5
0.44" - 0.78"	H6 SS	6	H6
0.44" - 0.91"	H8 SS	8	H8
0.50" - 1.06"	MM10 SS	10	MM10
0.56" - 1.06"	H10 SS	10	H10
0.69" - 1.25"	H12 SS	12	H12
0.75" - 1.50"	H16 SS	16	H16
0.81" - 1.75"	H20 SS	20	H20
1.06" - 2.00"	H24 SS	24	H24
1.31" - 2.25"	H28 SS	28	H28
1.56" - 2.50"	H32 SS	32	H32
1.81" - 2.75"	H36 SS	36	H36
2.06" - 3.00"	H40 SS	40	H40
2.31" - 3.25"	H44 SS	44	H44
2.56" - 3.50"	H48 SS	48	H48
2.81" - 3.75"	H52 SS	52	H52
3.06" - 4.00"	H56 SS	56	H56
3.31" - 4.25"	H60 SS	60	H60
3.56" - 4.50"	H64 SS	64	H64
4.06" - 5.00"	H72 SS	72	H72
4.56" - 5.50"	H80 SS	80	H80
5.06" - 6.00"	H88 SS	88	H88
5.56" - 6.50"	H96 SS	86	H96
6.06" - 7.00"	H104 SS	104	H104
6.81" - 7.75"	H116 SS	116	H116

- Maximum recommended torque on 5/16" width bands is 20 in.-lbs.
- Maximum recommended torque on 1/2" width bands is 50 in.-lbs.
- Other sizes available



# GAUGES – MODELS 20 & 24

## FEATURES

- Designed for use with gas, oil, water, or any medium not corrosive to brass or bronze
- Brass connection
- Dry filled
- Copper alloy wetted parts

## MODEL 20, DUAL SCALE

- Dual scale
- Bottom and back mount styles available
- Steel case, black paint
- Pressure and vacuum available



**BOTTOM MOUNT**

### 1.5" FACE SIZE, 1/8" MNPT

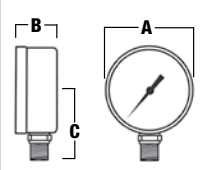
PRESSURE	PART NO.
0-30 PSI	0120DSB30
0-60 PSI	0120DSB60
0-100 PSI	0120DSB100
0-160 PSI	0120DSB160
0-300 PSI	0120DSB300

### 2" FACE SIZE, 1/4" MNPT

PRESSURE	PART NO.
0-30 PSI	1120DSB30
0-60 PSI	1120DSB60
0-100 PSI	1120DSB100
0-150 PSI	1120DSB150
0-300 PSI	1120DSB300

### 2.5" FACE SIZE, 1/4" MNPT - VACUUM

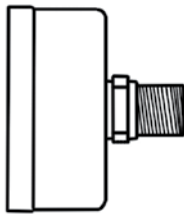
VACUUM	PART NO.
0-30 PSI	2120DSBVAC



**CASE DIMENSIONS**  
**MODEL 20 - BOTTOM MOUNT**

SIZE	A"	B"	C"
1-1/2"	1.656	1.000	1.297
2"	2.016	1.109	1.687
2-1/2"	2.469	1.187	1.828

## BACK MOUNT GAUGES



**BACK MOUNT**

### 1.5" FACE SIZE, 1/8" MNPT

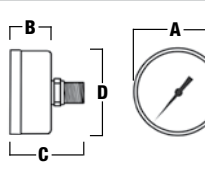
PRESSURE	PART NO.
0-30 PSI	0220DSB30
0-60 PSI	0220DSB60
0-100 PSI	0220DSB100
0-160 PSI	0220DSB160
0-300 PSI	0220DSB300

### 2" FACE SIZE, 1/4" MNPT

PRESSURE	PART NO.
0-30 PSI	1220DSB30
0-60 PSI	1220DSB60
0-100 PSI	1220DSB100
0-150 PSI	1220DSB150
0-300 PSI	1220DSB300

### 2.5" FACE SIZE, 1/4" MNPT - VACUUM

VACUUM	PART NO.
0-30 PSI	2220DSBVAC



**CASE DIMENSIONS**  
**MODEL 20 - BACK MOUNT**

SIZE	A"	B"	C"	D"
1-1/2"	1.655	0.950	1.600	1.614
2"	2.180	0.900	1.878	2.180
2-1/2"	2.490	1.124	1.912	2.425

## MODEL 24, SINGLE SCALE

- Single scale
- Bottom mount
- ABS case — 2" and 2.5"
- Steel case, black painted — 4"



### 2" FACE SIZE, BOTTOM MOUNT, 1/4" MNPT

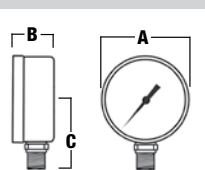
PRESSURE	PART NO.
0-30 PSI	1124DAB30
0-60 PSI	1124DAB60
0-100 PSI	1124DAB100
0-160 PSI	1124DAB160
0-200 PSI	1124DAB200
0-300 PSI	1124DAB300

### 2.5" FACE SIZE, BOTTOM MOUNT, 1/4" MNPT

PRESSURE	PART NO.
0-30 PSI	2124DAB30
0-60 PSI	2124DAB60
0-100 PSI	2124DAB100
0-160 PSI	2124DAB160
0-200 PSI	2124DAB200
0-300 PSI	2124DAB300
0-1000 PSI	2124DAB1000

### 4" FACE SIZE, BOTTOM MOUNT, 1/4" MNPT

PRESSURE	PART NO.
0-30 PSI	4124DSB30
0-60 PSI	4124DSB60
0-100 PSI	4124DSB100
0-160 PSI	4124DSB160
0-200 PSI	4124DSB200
0-300 PSI	4124DSB300
0-600 PSI	4124DSB600
0-1000 PSI	4124DSB1000



**CASE DIMENSIONS**  
**MODEL 24 - BOTTOM MOUNT**

SIZE	A"	B"	C"
2"	2.016	1.109	1.687
2-1/2"	2.469	1.187	1.828
4"	3.969	1.266	2.734

## MODEL 41, SINGLE SCALE

- Single scale
- Stainless steel case
- Glycerin filled
- Liquid-filled gauges are recommended for reducing shock caused by pressure fluctuations or vibration
- Designed for use with gas, oil, water, or any medium not corrosive to brass or bronze
- Bottom or back mount
- Copper alloy wetted parts
- 1/4" MNPT brass connection

### 2.5" FACE SIZE, BOTTOM MOUNT, 1/4" MNPT

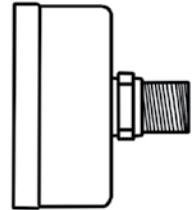
PRESSURE	PART NO.
0-15 PSI	2141GXB15
0-30 PSI	2141GXB30
0-60 PSI	2141GXB60
0-100 PSI	2141GXB100
0-160 PSI	2141GXB160
0-200 PSI	2141GXB200
0-300 PSI	2141GXB300
0-400 PSI	2141GXB400
0-600 PSI	2141GXB600
0-1000 PSI	2141GXB1000
0-1500 PSI	2141GXB1500
0-2000 PSI	2141GXB2000
0-3000 PSI	2141GXB3000
0-4000 PSI	2141GXB4000
0-5000 PSI	2141GXB5000



**BOTTOM MOUNT**

### 2.5" FACE SIZE, BACK MOUNT, 1/4" MNPT

PRESSURE	PART NO.
0-15 PSI	2241GXB15
0-30 PSI	2241GXB30
0-60 PSI	2241GXB60
0-100 PSI	2241GXB100
0-160 PSI	2241GXB160
0-200 PSI	2241GXB200
0-300 PSI	2241GXB300
0-400 PSI	2241GXB400
0-600 PSI	2241GXB600
0-1000 PSI	2241GXB1000
0-1500 PSI	2241GXB1500
0-2000 PSI	2241GXB2000
0-3000 PSI	2241GXB3000
0-4000 PSI	2241GXB4000
0-5000 PSI	2241GXB5000

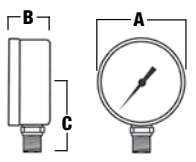


**BACK MOUNT**

### CASE DIMENSIONS

#### MODEL 41 - BOTTOM MOUNT

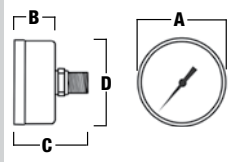
SIZE	A"	B"	C"
2-1/2"	2.670	1.100	2.270



### CASE DIMENSIONS

#### MODEL 41 - BACK MOUNT

SIZE	A"	B"	C"	D"
2-1/2"	2.630	1.120	2.214	2.470



## MODEL 80, AMMONIA GAUGES

- Agricultural anhydrous ammonia applications
- Single Scale
- Dry filled
- SS 1/4" MNPT bottom connection
- 316 SS movement and bourdon tube
- Enameled steel case

### 2.5" FACE SIZE, 1/4" BOTTOM MOUNT

PRESSURE	PART NO.
0-60 PSI	2180DSX60
0-160 PSI	2180DSX160
0-400 PSI	2180DSX400

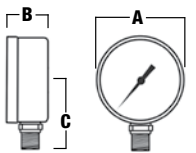
### 4" FACE SIZE, 1/4" BOTTOM MOUNT

PRESSURE	PART NO.
0-60 PSI	4180DSX60
0-160 PSI	4180DSX160
0-400 PSI	4180DSX400

### CASE DIMENSIONS

#### MODEL 80 - BOTTOM MOUNT

SIZE	A"	B"	C"
2-1/2"	2.469	1.187	1.828
4"	3.969	1.266	2.734



**BOTTOM MOUNT**

NOTE: Contact sales office for back mount availability.

# PIPE, HOSE AND NOZZLE FITTINGS: NYLON AND GLASS-FILLED POLYPROPYLENE

## FEATURES

- Chemical resistant
- Good mechanical strength
- Working pressure up to 150 psi at 70° F

## THREAD CODE

**FGHT** – Female Garden Hose  
**FPS** – Female Pipe Straight  
**FPT** – Female Pipe Tapered  
**FST** – Female Straight  
**GH** – Garden Hose

**HB** – Hose Barb  
**MGHT** – Male Garden Hose  
**MST** – Male Straight  
**NPT** – National Pipe Tapered  
**UN** – Unified National  
**MPT** – Male Pipe Thread

## ADAPTERS

### ADAPTER, STRAIGHT HOSE BARB: FPT TO “SLIP ON” HB



#### NYLON

HB	FPT	PART NO.
1/4"	1/4"-18 NPT	Q14
1/2"	1/2"-14 NPT	Q12



#### POLYPROPYLENE

HB	FPT	PART NO.
1/4"	1/4"-18 NPT	3-Q14
1/2"	1/2"-14 NPT	3-Q12

### ADAPTER, STRAIGHT HOSE BARB: FPT TO HB



#### NYLON

FPT	HB	PART NO.
1/8"-27 NPT	1/4"	A1814F
1/8"-27 NPT	3/8"	A1838F
1/4"-18 NPT	1/4"	A14F
1/4"-18 NPT	3/8"	A1438F
1/4"-18 NPT	1/2"	A1412F
1/4"-18 NPT	5/8"	A1458F
3/8"-18 NPT	1/4"	A3814F
3/8"-18 NPT	3/8"	A38F
3/8"-18 NPT	1/2"	A3812F
3/8"-18 NPT	5/8"	A3858F
3/8"-18 NPT	3/4"	A3834F
1/2"-14 NPT	1/4"	A1214F
1/2"-14 NPT	3/8"	A1238F
1/2"-14 NPT	1/2"	A12F
1/2"-14 NPT	5/8"	A1258F
1/2"-14 NPT	3/4"	A1234F
3/4"-14 NPT	1/4"	A3414F
3/4"-14 NPT	3/8"	A3438F
3/4"-14 NPT	1/2"	A3412F
3/4"-14 NPT	5/8"	A3458F
3/4"-14 NPT	3/4"	A34F



#### POLYPROPYLENE

FPT	HB	PART NO.
1/8"-27 NPT	1/4"	3-A1814F
1/8"-27 NPT	3/8"	3-A1838F
1/4"-18 NPT	1/4"	3-A14F
1/4"-18 NPT	3/8"	3-A1438F
1/4"-18 NPT	1/2"	3-A1412F
1/4"-18 NPT	5/8"	3-A1458F
3/8"-18 NPT	1/4"	3-A3814F
3/8"-18 NPT	3/8"	3-A38F
3/8"-18 NPT	1/2"	3-A3812F
3/8"-18 NPT	5/8"	3-A3858F
3/8"-18 NPT	3/4"	3-A3834F
1/2"-14 NPT	1/4"	3-A1214F
1/2"-14 NPT	3/8"	3-A1238F
1/2"-14 NPT	1/2"	3-A12F
1/2"-14 NPT	5/8"	3-A1258F
1/2"-14 NPT	3/4"	3-A1234F
3/4"-14 NPT	1/4"	3-A3414F
3/4"-14 NPT	3/8"	3-A3438F
3/4"-14 NPT	1/2"	3-A3412F
3/4"-14 NPT	5/8"	3-A3458F
3/4"-14 NPT	3/4"	3-A34F

NOTE: Nylon and polypropylene fittings have good resistance to a broad range of chemicals. For specific recommendations contact customer service at 1-800-634-3078 or see Material Reference on pages 73-76.



## ADAPTER, STRAIGHT HOSE BARB: MGHT TO HB



### NYLON

MGHT	HB	PART NO.
3/4"--11-1/2 GH	1/4"	D3414
3/4"--11-1/2 GH	3/8"	D3438
3/4"--11-1/2 GH	1/2"	D3412
3/4"--11-1/2 GH	5/8"	D3458
3/4"--11-1/2 GH	3/4"	D34



### POLYPROPYLENE

MGHT	HB	PART NO.
3/4"--11-1/2 GH	1/4"	3-D3414
3/4"--11-1/2 GH	3/8"	3-D3438
3/4"--11-1/2 GH	1/2"	3-D3412
3/4"--11-1/2 GH	5/8"	3-D3458
3/4"--11-1/2 GH	3/4"	3-D34

## ADAPTER, STRAIGHT HOSE BARB: MST TO HB



### NYLON

MST	HB	PART NO.
11/16--16 UN	3/8"	38D
11/16--16 UN	1/2"	3812D



### POLYPROPYLENE

MST	HB	PART NO.
11/16--16 UN	3/8"	3-38D
11/16--16 UN	1/2"	3-3812D

## ADAPTER: FEMALE GARDEN HOSE THREAD TO MALE GARDEN HOSE THREAD



### NYLON

FGHT	MGHT	PART NO.
3/4"--11-1/2 GH	3/4"--11-1/2 GH	I34



### POLYPROPYLENE

FGHT	MGHT	PART NO.
3/4"--11-1/2 GH	3/4"--11-1/2 GH	3-I34

## ADAPTER: FEMALE GARDEN HOSE THREAD TO MALE PIPE THREAD



### NYLON

MPT	FGHT	PART NO.
3/4"--14 NPT	3/4"--11-1/2 GH	H34



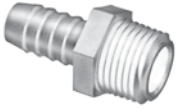
### POLYPROPYLENE

MPT	FGHT	PART NO.
3/4"--14 NPT	3/4"--11-1/2 GH	3-H34



# PIPE, HOSE AND NOZZLE FITTINGS: ADAPTERS

## ADAPTER, STRAIGHT HOSE BARB: MPT TO HB



### NYLON

MPT	HB	PART NO.
1/8"-27 NPT	3/16"	A18316
1/8"-27 NPT	1/4"	A1814
1/8"-27 NPT	5/16"	A18516
1/8"-27 NPT	3/8"	A1838
1/4"-18 NPT	3/16"	A14316
1/4"-18 NPT	1/4"	A14
1/4"-18 NPT	5/16"	A14516
1/4"-18 NPT	3/8"	A1438
1/4"-18 NPT	1/2"	A1412
3/8"-18 NPT	1/4"	A3814
3/8"-18 NPT	5/16"	A38516
3/8"-18 NPT	3/8"	A38
3/8"-18 NPT	1/2"	A3812
3/8"-18 NPT	5/8"	A3858
1/2"-14 NPT	1/4"	A1214
1/2"-14 NPT	3/8"	A1238
1/2"-14 NPT	1/2"	A12
1/2"-14 NPT	5/8"	A1258
1/2"-14 NPT	3/4"	A1234
1/2"-14 NPT	1"	A12100
3/4"-14 NPT	1/4"	A3414
3/4"-14 NPT	3/8"	A3438
3/4"-14 NPT	1/2"	A3412
3/4"-14 NPT	5/8"	A3458
3/4"-14 NPT	3/4"	A34
3/4"-14 NPT	1"	A34100
1"--11-1/2 NPT	1/4"	A10014
1"--11-1/2 NPT	3/8"	A10038
1"--11-1/2 NPT	1/2"	A10012
1"--11-1/2 NPT	5/8"	A10058
1"--11-1/2 NPT	3/4"	A10034
1"--11-1/2 NPT	1"	A100
1"--11-1/2 NPT	1-1/4"	A100114
1-1/4"--11-1/2 NPT	3/4"	A11434
1-1/4"--11-1/2 NPT	1"	A114100
1-1/4"--11-1/2 NPT	1-1/4"	A114
1-1/4"--11-1/2 NPT	1-1/2"	A114112
1-1/2"--11-1/2 NPT	1-1/4"	A112114
1-1/2"--11-1/2 NPT	1-1/2"	A112
2"--11-1/2 NPT	2"	A200



### POLYPROPYLENE

MPT	HB	PART NO.
1/8"-27 NPT	3/16"	3-A18316
1/8"-27 NPT	1/4"	3-A1814
1/8"-27 NPT	5/16"	3-A18516
1/8"-27 NPT	3/8"	3-A1838
1/4"-18 NPT	3/16"	3-A14316
1/4"-18 NPT	1/4"	3-A14
1/4"-18 NPT	5/16"	3-A14516
1/4"-18 NPT	3/8"	3-A1438
1/4"-18 NPT	1/2"	3-A1412
3/8"-18 NPT	1/4"	3-A3814
3/8"-18 NPT	5/16"	3-A38516
3/8"-18 NPT	3/8"	3-A38
3/8"-18 NPT	1/2"	3-A3812
3/8"-18 NPT	5/8"	3-A3858
1/2"-14 NPT	1/4"	3-A1214
1/2"-14 NPT	3/8"	3-A1238
1/2"-14 NPT	1/2"	3-A12
1/2"-14 NPT	5/8"	3-A1258
1/2"-14 NPT	3/4"	3-A1234
1/2"-14 NPT	1"	3-A12100
3/4"-14 NPT	1/4"	3-A3414
3/4"-14 NPT	3/8"	3-A3438
3/4"-14 NPT	1/2"	3-A3412
3/4"-14 NPT	5/8"	3-A3458
3/4"-14 NPT	3/4"	3-A34
3/4"-14 NPT	1"	3-A34100
1"--11-1/2 NPT	1/4"	3-A10014
1"--11-1/2 NPT	3/8"	3-A10038
1"--11-1/2 NPT	1/2"	3-A10012
1"--11-1/2 NPT	5/8"	special order
1"--11-1/2 NPT	3/4"	3-A10034
1"--11-1/2 NPT	1"	3-A100
1"--11-1/2 NPT	1-1/4"	3-A100114
1-1/4"--11-1/2 NPT	3/4"	3-A11434
1-1/4"--11-1/2 NPT	1"	3-A114100
1-1/4"--11-1/2 NPT	1-1/4"	3-A114
1-1/4"--11-1/2 NPT	1-1/2"	3-A114112
1-1/2"--11-1/2 NPT	1-1/4"	3-A112114
1-1/2"--11-1/2 NPT	1-1/2"	3-A112
2"--11-1/2 NPT	2"	3-A200

## ADAPTER: MALE GARDEN HOSE THREAD TO FEMALE PIPE THREAD



### NYLON

MGHT	FPT	PART NO.
3/4"--11-1/2 GH	1/4"-18 NPT	G3414
3/4"--11-1/2 GH	1/2"-14 NPT	G3412
3/4"--11-1/2 GH	3/4"-14 NPT	G34



### POLYPROPYLENE

MGHT	FPT	PART NO.
3/4"--11-1/2 GH	1/4"-18 NPT	3-G3414
3/4"--11-1/2 GH	1/2"-14 NPT	3-G3412
3/4"--11-1/2 GH	3/4"-14 NPT	3-G34

## ADAPTER: MALE GARDEN HOSE THREAD TO MALE PIPE THREAD



### NYLON

MGHT	MPT	PART NO.
3/4"--11-1/2 GH	1/4"-18 NPT	E3414
3/4"--11-1/2 GH	3/8"-18 NPT	E3438
3/4"--11-1/2 GH	1/2"-14 NPT	E3412
3/4"--11-1/2 GH	3/4"-14 NPT	E34
3/4"--11-1/2 GH	1"-11-1/2 NPT	E34100



### POLYPROPYLENE

MGHT	MPT	PART NO.
3/4"--11-1/2 GH	1/4"-18 NPT	3-E3414
3/4"--11-1/2 GH	3/8"-18 NPT	3-E3438
3/4"--11-1/2 GH	1/2"-14 NPT	3-E3412
3/4"--11-1/2 GH	3/4"-14 NPT	3-E34
3/4"--11-1/2 GH	1"-11-1/2 NPT	3-E34100

## ADAPTER: MALE PIPE THREAD TO FEMALE GARDEN HOSE THREAD SWIVEL



### NYLON

SWIVEL OD	MPT	PART NO.
15/16"	3/8"-18 NPT	C38NPT
15/16"	1/2"-14 NPT	C12NPT

NOTE: For use with Knurled Swivel Nut



### POLYPROPYLENE

SWIVEL OD	MPT	PART NO.
15/16"	3/8"-18 NPT	3-C38NPT
15/16"	1/2"-14 NPT	3-C12NPT

NOTE: For use with Knurled Swivel Nut



# PIPE, HOSE AND NOZZLE FITTINGS: CAPS

## CAP: KNURLED



### NYLON

FEMALE THREAD	DESCRIPTION	PART NO.
3/4"--11-1/2	GH	N34
3/4"--14	FPS	N35



### POLYPROPYLENE

FEMALE THREAD	DESCRIPTION	PART NO.
3/4"--11-1/2	GH	3-N34
3/4"--14	FPS	3-N35

## CAP: KNURLED, FST



### NYLON

FEMALE THREAD	UNIFIED NAT'L THREAD	PART NO.
11/16	16 UN	3942

NOTE: Fits all Nozzle Fittings with 11/16" straight thread.



### POLYPROPYLENE

FEMALE THREAD	UNIFIED NAT'L THREAD	PART NO.
11/16	16 UN	3-3942

NOTE: Fits all Nozzle Fittings with 11/16" straight thread.

# CROSSES

## CROSS: HOSE BARBS TO MALE STRAIGHT THREAD



### NYLON

MST	HB	PART NO.
11/16"--16 UN	3/8"	T38C
11/16"--16 UN	1/2"	T12C
11/16"--16 UN	3/4"	T34C



### POLYPROPYLENE

MST	HB	PART NO.
11/16"--16 UN	3/8"	3-T38C
11/16"--16 UN	1/2"	3-T12C
11/16"--16 UN	3/4"	3-T34C

## COUPLING: FEMALE GARDEN HOSE THREAD TO FEMALE PIPE THREAD



### NYLON

FGHT	FPT	PART NO.
3/4"-11-1/2 GH	1/2"-14 NPT	J3412
3/4"-11-1/2 GH	3/4"-11-1/2 NPT	J34



### POLYPROPYLENE

FGHT	FPT	PART NO.
3/4"-11-1/2 GH	1/2"-14 NPT	3-J3412
3/4"-11-1/2 GH	3/4"-11-1/2 NPT	3-J34

## COUPLING: FEMALE PIPE THREAD



### NYLON

FPT	FPT	PART NO.
1/8"-27 NPT	1/8"-27 NPT	FC18
1/4"-18 NPT	1/4"-18 NPT	FC14
1/4"-18 NPT	1/8"-27 NPT	FC1418
3/8"-18 NPT	1/8"-27 NPT	FC3818
3/8"-18 NPT	1/4"-18 NPT	FC3814
3/8"-18 NPT	3/8"-18 NPT	FC38
1/2"-14 NPT	3/8"-18 NPT	FC1238
1/2"-14 NPT	1/2"-14 NPT	FC12
3/4"-14 NPT	3/8"-18 NPT	FC3438
3/4"-14 NPT	1/2"-14 NPT	FC3412
3/4"-14 NPT	3/4"-14 NPT	FC34
1"-11-1/2 NPT	1"-11-1/2 NPT	FC100
1-1/4"-11-1/2 NPT	1-1/4"-11-1/2 NPT	FC114
1-1/2"-11-1/2 NPT	1-1/2"-11-1/2 NPT	FC112
2"-11-1/2 NPT	2"-11-1/2 NPT	FC200



### POLYPROPYLENE

FPT	FPT	PART NO.
1/8"-27 NPT	1/8"-27 NPT	3-FC18
1/4"-18 NPT	1/4"-18 NPT	3-FC14
1/4"-18 NPT	1/8"-27 NPT	3-FC1418
3/8"-18 NPT	1/8"-27 NPT	3-FC3818
3/8"-18 NPT	1/4"-18 NPT	3-FC3814
3/8"-18 NPT	3/8"-18 NPT	3-FC38
1/2"-14 NPT	3/8"-18 NPT	3-FC1238
1/2"-14 NPT	1/2"-14 NPT	3-FC12
3/4"-14 NPT	3/8"-18 NPT	3-FC3438
3/4"-14 NPT	1/2"-14 NPT	3-FC3412
3/4"-14 NPT	3/4"-14 NPT	3-FC34
1"-11-1/2 NPT	1"-11-1/2 NPT	3-FC100
1-1/4"-11-1/2 NPT	1-1/4"-11-1/2 NPT	3-FC114
1-1/2"-11-1/2 NPT	1-1/2"-11-1/2 NPT	3-FC112
2"-11-1/2 NPT	2"-11-1/2 NPT	3-FC200

## COUPLING: FEMALE PIPE THREAD TO FEMALE STRAIGHT THREAD



### NYLON

FST	FPT	PART NO.
11/16"-16 UN	1/4"-18 NPT	NF1614



### POLYPROPYLENE

FST	FPT	PART NO.
11/16"-16 UN	1/4"-18 NPT	3-NF1614



# PIPE, HOSE AND NOZZLE FITTINGS: ELBOWS

## ELBOW: MALE GARDEN HOSE THREAD TO HOSE BARB



### NYLON

MGHT	HB	PART NO.
3/4"-11-1/2 GH	1/4"	ELD3414
3/4"-11-1/2 GH	3/8"	ELD3438
3/4"-11-1/2 GH	1/2"	ELD3412
3/4"-11-1/2 GH	5/8"	ELD3458
3/4"-11-1/2 GH	3/4"	ELD34
3/4"-11-1/2 GH	1"	ELD34100



### POLYPROPYLENE

MGHT	HB	PART NO.
3/4"-11-1/2 GH	1/4"	3-ELD3414
3/4"-11-1/2 GH	3/8"	3-ELD3438
3/4"-11-1/2 GH	1/2"	3-ELD3412
3/4"-11-1/2 GH	5/8"	3-ELD3458
3/4"-11-1/2 GH	3/4"	3-ELD34
3/4"-11-1/2 GH	1"	3-ELD34100

## ELBOW: FEMALE PIPE THREAD TO FEMALE PIPE THREAD



### NYLON

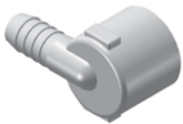
FPT	FPT	PART NO.
1/2"-14 NPT	1/2"-14 NPT	LL12
3/4"-14 NPT	3/4"-14 NPT	LL34



### POLYPROPYLENE

FPT	FPT	PART NO.
1/2"-14 NPT	1/2"-14 NPT	3-LL12
3/4"-14 NPT	3/4"-14 NPT	3-LL34

## ELBOW: FEMALE PIPE THREAD TO SHORT HOSE BARB



### NYLON

FPT	HB	PART NO.
3/4"-14 NPT	1/2"	EL3412SF
3/4"-14 NPT	5/8"	EL3458SF
3/4"-14 NPT	3/4"	EL34SF



### POLYPROPYLENE

FPT	HB	PART NO.
3/4"-14 NPT	1/2"	3-EL3412SF
3/4"-14 NPT	5/8"	3-EL3458SF
3/4"-14 NPT	3/4"	3-EL34SF

## ELBOW: FEMALE PIPE THREAD TO HOSE BARB



### NYLON

FPT	HB	PART NO.
1/8"-27 NPT	3/16"	EL18316F
1/8"-27 NPT	1/4"	EL1814F
1/8"-27 NPT	3/8"	EL1838F
1/4"-27 NPT	3/16"	EL14316F
1/4"-27 NPT	1/4"	EL14F
1/4"-27 NPT	3/8"	EL1438F
3/8"-18 NPT	1/4"	EL3814F
3/8"-18 NPT	3/8"	EL38F
3/8"-18 NPT	1/2"	EL3812F
1/2"-14 NPT	1/4"	EL1214F
1/2"-14 NPT	3/8"	EL1238F
1/2"-14 NPT	1/2"	EL12F
1/2"-14 NPT	5/8"	EL1258F
1/2"-14 NPT	3/4"	EL1234F
3/4"-14 NPT	3/8"	EL3438F
3/4"-14 NPT	1/2"	EL3412F
3/4"-14 NPT	5/8"	EL3458F
3/4"-14 NPT	3/4"	EL34F



### POLYPROPYLENE

FPT	HB	PART NO.
1/8"-27 NPT	3/16"	3-EL18316F
1/8"-27 NPT	1/4"	3-EL1814F
1/8"-27 NPT	3/8"	3-EL1838F
1/4"-27 NPT	3/16"	3-EL14316F
1/4"-27 NPT	1/4"	3-EL14F
1/4"-27 NPT	3/8"	3-EL1438F
3/8"-18 NPT	1/4"	3-EL3814F
3/8"-18 NPT	3/8"	3-EL38F
3/8"-18 NPT	1/2"	3-EL3812F
1/2"-14 NPT	1/4"	3-EL1214F
1/2"-14 NPT	3/8"	3-EL1238F
1/2"-14 NPT	1/2"	3-EL12F
1/2"-14 NPT	5/8"	3-EL1258F
1/2"-14 NPT	3/4"	3-EL1234F
3/4"-14 NPT	3/8"	3-EL3438F
3/4"-14 NPT	1/2"	3-EL3412F
3/4"-14 NPT	5/8"	3-EL3458F
3/4"-14 NPT	3/4"	3-EL34F

## ELBOW: MALE STRAIGHT THREAD TO HOSE BARB



### NYLON

MST	HB	PART NO.
11/16--16 UN	1/4"	NTL14
11/16--16 UN	3/8"	NTL38
11/16--16 UN	1/2"	NTL12
11/16--16 UN	5/8"	NTL58
11/16--16 UN	3/4"	NTL34



### POLYPROPYLENE

MST	HB	PART NO.
11/16--16 UN	1/4"	3-NTL14
11/16--16 UN	3/8"	3-NTL38
11/16--16 UN	1/2"	3-NTL12
11/16--16 UN	5/8"	3-NTL58
11/16--16 UN	3/4"	3-NTL34



# PIPE, HOSE AND NOZZLE FITTINGS: ELBOWS

## ELBOW: MALE PIPE THREAD TO HOSE BARB



### NYLON

MPT	HB	PART NO.
1/8"-27 NPT	1/4"	EL1814
1/8"-27 NPT	3/8"	EL1838
1/4"-18 NPT	3/16"	EL14316
1/4"-18 NPT	1/4"	EL14
1/4"-18 NPT	5/16"	EL14516
1/4"-18 NPT	3/8"	EL1438
1/4"-18 NPT	1/2"	EL1412
3/8"-18 NPT	1/4"	EL3814
3/8"-18 NPT	5/16"	EL38516
3/8"-18 NPT	3/8"	EL38
3/8"-18 NPT	1/2"	EL3812
3/8"-18 NPT	5/8"	EL3858
1/2"-14 NPT	1/4"	EL1214
1/2"-14 NPT	3/8"	EL1238
1/2"-14 NPT	1/2"	EL12
1/2"-14 NPT	5/8"	EL1258
1/2"-14 NPT	3/4"	EL1234
3/4"-14 NPT	1/4"	EL3414
3/4"-14 NPT	3/8"	EL3438
3/4"-14 NPT	1/2"	EL3412
3/4"-14 NPT	5/8"	EL3458
3/4"-14 NPT	3/4"	EL34
3/4"-14 NPT	1"	EL34100
1"--11-1/2 NPT	1/2"	EL10012
1"--11-1/2 NPT	3/4"	EL10034
1"--11-1/2 NPT	1"	EL100
1-1/4"--11-1/2 NPT	1"	EL114100
1-1/4"--11-1/2 NPT	1-1/4"	EL114
1-1/2"--11-1/2 NPT	1-1/2"	EL112
2"--11-1/2 NPT	2"	EL200



### POLYPROPYLENE

MPT	HB	PART NO.
1/8"-27 NPT	1/4"	3-EL1814
1/8"-27 NPT	3/8"	3-EL1838
1/4"-18 NPT	3/16"	3-EL14316
1/4"-18 NPT	1/4"	3-EL14
1/4"-18 NPT	5/16"	3-EL14516
1/4"-18 NPT	3/8"	3-EL1438
1/4"-18 NPT	1/2"	3-EL1412
3/8"-18 NPT	1/4"	3-EL3814
3/8"-18 NPT	5/16"	3-EL38516
3/8"-18 NPT	3/8"	3-EL38
3/8"-18 NPT	1/2"	3-EL3812
3/8"-18 NPT	5/8"	3-EL3858
1/2"-14 NPT	1/4"	3-EL1214
1/2"-14 NPT	3/8"	3-EL1238
1/2"-14 NPT	1/2"	3-EL12
1/2"-14 NPT	5/8"	3-EL1258
1/2"-14 NPT	3/4"	3-EL1234
3/4"-14 NPT	1/4"	3-EL3414
3/4"-14 NPT	3/8"	3-EL3438
3/4"-14 NPT	1/2"	3-EL3412
3/4"-14 NPT	5/8"	3-EL3458
3/4"-14 NPT	3/4"	3-EL34
3/4"-14 NPT	1"	3-EL34100
1"--11-1/2 NPT	1/2"	3-EL10012
1"--11-1/2 NPT	3/4"	3-EL10034
1"--11-1/2 NPT	1"	3-EL100
1-1/4"--11-1/2 NPT	1"	3-EL114100
1-1/4"--11-1/2 NPT	1-1/4"	3-EL114
1-1/2"--11-1/2 NPT	1-1/2"	3-EL112
2"--11-1/2 NPT	2"	3-EL200

### THREAD CODE

**FGHT** – Female Garden Hose  
**FPS** – Female Pipe Straight  
**FPT** – Female Pipe Tapered  
**FST** – Female Straight  
**GH** – Garden Hose

**HB** – Hose Barb  
**MGHT** – Male Garden Hose  
**MST** – Male Straight  
**NPT** – National Pipe Tapered  
**UN** – Unified National  
**MPT** – Male Pipe Thread



## ELBOW ADAPTERS: HOSE BARB TO HOSE BARB



### NYLON

HB	HB	PART NO.
1/4"	1/4"	EL14HB
3/8"	3/8"	EL38HB
1/2"	1/2"	EL12HB
5/8"	5/8"	EL58HB
3/4"	3/4"	EL34HB
1"	1"	EL100HB



### POLYPROPYLENE

HB	HB	PART NO.
1/4"	1/4"	3-EL14HB
3/8"	3/8"	3-EL38HB
1/2"	1/2"	3-EL12HB
5/8"	5/8"	3-EL58HB
3/4"	3/4"	3-EL34HB
1"	1"	3-EL100HB

## ELBOW REDUCERS: HOSE BARB TO HOSE BARB



### NYLON

HB	HB	PART NO.
3/8"	1/4"	EL3814HB
1/2"	1/4"	EL1214HB
1/2"	3/8"	EL1238HB
3/4"	5/8"	EL3458HB



### POLYPROPYLENE

HB	HB	PART NO.
3/8"	1/4"	3-EL3814HB
1/2"	1/4"	3-EL1214HB
1/2"	3/8"	3-EL1238HB
3/4"	5/8"	3-EL3458HB

# ELBOW-STREET

## ELBOW-STREET: 45° MPT X FPT



### NYLON

MPT	FPT	PART NO.
3/4"-14 NPT	3/4"-14 NPT	SE3445



### POLYPROPYLENE

MPT	FPT	PART NO.
3/4"-14 NPT	3/4"-14 NPT	3-SE3445



# PIPE, HOSE AND NOZZLE FITTINGS: ELBOW-STREET

## ELBOW-STREET: 90° MPT x FPT



**NYLON**

MPT	FPT	PART NO.
1/8"-27 NPT	1/8"-27 NPT	SE18
1/4"-18 NPT	1/4"-18 NPT	SE14
3/8"-18 NPT	3/8"-18 NPT	SE38
1/2"-14 NPT	1/2"-14 NPT	SE12
3/4"-14 NPT	3/4"-14 NPT	SE34
1-1/2"-11-1/2 NPT	1-1/2"-11-1/2 NPT	SE112
2"-11-1/2 NPT	2"-11-1/2 NPT	SE200



**POLYPROPYLENE**

MPT	FPT	PART NO.
1/8"-27 NPT	1/8"-27 NPT	3-SE18
1/4"-18 NPT	1/4"-18 NPT	3-SE14
3/8"-18 NPT	3/8"-18 NPT	3-SE38
1/2"-14 NPT	1/2"-14 NPT	3-SE12
3/4"-14 NPT	3/4"-14 NPT	3-SE34
1-1/2"-11-1/2 NPT	1-1/2"-11-1/2 NPT	3-SE112
2"-11-1/2 NPT	2"-11-1/2 NPT	3-SE200

## FITTINGS

### FITTING: BARBED NOZZLE



**NYLON**

BARB LENGTH	HB	PART NO.
1-13/64"	1/4"	K8414
1-13/64"	3/8"	K8438
1-13/64"	1/2"	K8412

NOTE: For use with Swivel Nut (Part No. 8027) P. 51



**POLYPROPYLENE**

BARB LENGTH	HB	PART NO.
1-13/64"	1/4"	3-K8414
1-13/64"	3/8"	3-K8438
1-13/64"	1/2"	3-K8412

NOTE: For use with Swivel Nut (Part No. 3-8027) p.51



### HOSE BARB: FLAT SEAT



**NYLON**

SEAT BASE OD	HB	PART NO.
15/16"	1/4"*	C14
15/16"	3/8"*	C38
15/16"	1/2"*	C12
15/16"	5/8"*	C58
15/16"	3/4"*	C34
15/16"	1"***	C100

NOTE: For use with \*Knurled Swivel Nut (Part No. B34 & B35) and  
\*\*Hex Swivel Nut; and Vinyl Washer (Part No. W406V) see p. 51



**POLYPROPYLENE**

SEAT BASE OD	HB	PART NO.
15/16"	1/4"*	3-C14
15/16"	3/8"*	3-C38
15/16"	1/2"*	3-C12
15/16"	5/8"*	3-C58
15/16"	3/4"*	3-C34
15/16"	1"***	3-C100

NOTE: For use with \* Knurled Swivel Nut (Part No. B34 & B35) and  
\*\*Hex Swivel Nut; and Vinyl Washer (Part No. W406V) see p. 51

**MENDER: HOSE BARB TO HOSE BARB W/O STOP**



**NYLON**

HB	HB	PART NO.
1/4"	3/16"	HM14316
1/4"	1/4"	HM14
5/16"	5/16"	HM516
3/8"	1/4"	HM3814
3/8"	3/8"	HM38
1/2"	1/4"	HM1214
1/2"	3/8"	HM1238
1/2"	1/2"	HM12
5/8"	5/16"	HM58516
5/8"	3/8"	HM5838
5/8"	1/2"	HM5812
5/8"	5/8"	HM58



**POLYPROPYLENE**

HB	HB	PART NO.
1/4"	3/16"	3-HM14316
1/4"	1/4"	3-HM14
5/16"	5/16"	3-HM516
3/8"	1/4"	3-HM3814
3/8"	3/8"	3-HM38
1/2"	1/4"	3-HM1214
1/2"	3/8"	3-HM1238
1/2"	1/2"	3-HM12
5/8"	5/16"	3-HM58516
5/8"	3/8"	3-HM5838
5/8"	1/2"	3-HM5812
5/8"	5/8"	3-HM58

**MENDER: HOSE BARB TO HOSE BARB W/STOP**



**NYLON**

HB	HB	PART NO.
1/4"	1/4"	SHM14
3/8"	3/8"	SHM38
1/2"	3/8"	SHM1238
1/2"	1/2"	SHM12
1/2"	5/8"	SHM1258
5/8"	3/8"	SHM5838
5/8"	5/8"	SHM58
3/4"	3/4"	SHM34
1"	1"	SHM100
1-1/4"	1-1/4"	SHM114
1-1/2"	1-1/2"	SHM112
2"	2"	SHM200



**POLYPROPYLENE**

HB	HB	PART NO.
1/4"	1/4"	3-SHM14
3/8"	3/8"	3-SHM38
1/2"	3/8"	3-SHM1238
1/2"	1/2"	3-SHM12
1/2"	5/8"	3-SHM1258
5/8"	3/8"	3-SHM5838
5/8"	5/8"	3-SHM58
3/4"	3/4"	3-SHM34
1"	1"	3-SHM100
1-1/4"	1-1/4"	3-SHM114
1-1/2"	1-1/2"	3-SHM112
2"	2"	3-SHM200



# PIPE, HOSE AND NOZZLE FITTINGS: NIPPLE

## NIPPLE: MALE PIPE THREAD TO MALE PIPE THREAD



**NYLON**



**POLYPROPYLENE**

MPT	MPT	PART NO.
1/8"-27 NPT	1/8"-27 NPT	M18
1/4"-18 NPT	1/8"-27 NPT	M1418
1/4"-18 NPT	1/4"-18 NPT	M14
3/8"-18 NPT	1/8"-27 NPT	M3818
3/8"-18 NPT	1/4"-18 NPT	M3814
3/8"-18 NPT	3/8"-18 NPT	M38
1/2"-14 NPT	1/4"-18 NPT	M1214
1/2"-14 NPT	3/8"-18 NPT	M1238
1/2"-14 NPT	1/2"-14 NPT	M12
3/4"-14 NPT	3/8"-18 NPT	M3438
3/4"-14 NPT	1/2"-14 NPT	M3412
3/4"-14 NPT	3/4"-14 NPT	M34
1"-11-1/2 NPT	1"-11-1/2 NPT	M100
1-1/4"-11-1/2 NPT	1-1/4"-11-1/2 NPT	M114
1-1/2"-11-1/2 NPT	1-1/2"-11-1/2 NPT	M112
2"-11-1/2 NPT	2"-11-1/2 NPT	M200

MPT	MPT	PART NO.
1/8"-27 NPT	1/8"-27 NPT	3-M18
1/4"-18 NPT	1/8"-27 NPT	3-M1418
1/4"-18 NPT	1/4"-18 NPT	3-M14
3/8"-18 NPT	1/8"-27 NPT	3-M3818
3/8"-18 NPT	1/4"-18 NPT	3-M3814
3/8"-18 NPT	3/8"-18 NPT	3-M38
1/2"-14 NPT	1/4"-18 NPT	3-M1214
1/2"-14 NPT	3/8"-18 NPT	3-M1238
1/2"-14 NPT	1/2"-14 NPT	3-M12
3/4"-14 NPT	3/8"-18 NPT	3-M3438
3/4"-14 NPT	1/2"-14 NPT	3-M3412
3/4"-14 NPT	3/4"-14 NPT	3-M34
1"-11-1/2 NPT	1"-11-1/2 NPT	3-M100
1-1/4"-11-1/2 NPT	1-1/4"-11-1/2 NPT	3-M114
1-1/2"-11-1/2 NPT	1-1/2"-11-1/2 NPT	3-M112
2"-11-1/2 NPT	2"-11-1/2 NPT	3-M200

## NIPPLE: MALE STRAIGHT THREAD TO MALE PIPE THREAD



**NYLON**



**POLYPROPYLENE**

MST	MPT	PART NO.
11/16-16 UN	1/4"-18 NPT	NB1614
11/16-16 UN	1/2"-14 NPT	NB1612

MST	MPT	PART NO.
11/16-16 UN	1/4"-18 NPT	3-NB1614
11/16-16 UN	1/2"-14 NPT	3-NB1612

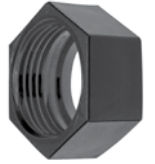
## NUT: HEX SWIVEL - THREAD X OUTLET



### NYLON

OUTLET	FPS	PART NO.
1-1/16"	1"-11-1/2 NPSM	B100

NOTE: Use with Flat Seat Hose Barb, C100, p. 48



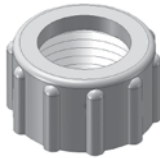
### POLYPROPYLENE

OUTLET	FPS	PART NO.
1-1/16"	1"-11-1/2 NPSM	3-B100

Note: Use with Flat Seat Hose Barb, 3-C100, p. 48



## NUT: KNURLED SWIVEL - THREAD X OUTLET



### NYLON

OUTLET	FEMALE THREAD	PART NO.
27/32"	3/4"-11-1/2 GH	B34
27/32"	3/4"-14 FPS	B35

NOTE: Used with Hose Barb Flat Seat. See page 48.



### POLYPROPYLENE

OUTLET	FEMALE THREAD	PART NO.
27/32"	3/4"-11-1/2 GH	3-B34
27/32"	3/4"-14 FPS	3-B35

NOTE: Used with Hose Barb Flat Seat. See page 48.



## NUT: SWIVEL - FST X OUTLET



### NYLON

OUTLET	FST	PART NO.
1/2"	11/16-16 UN	8027

Use with Barbed Nozzle Fitting, p. 48.



### POLYPROPYLENE

OUTLET	FST	PART NO.
1/2"	11/16-16 UN	3-8027

Use with Barbed Nozzle Fitting, p. 48.



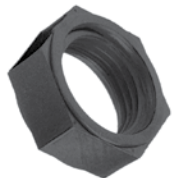
## NUT: NOZZLE - FST



### NYLON

FST		PART NO.
11/16-16 UN	—	B12

Fits all nozzle fittings with 11/16" straight thread.



### POLYPROPYLENE

FST		PART NO.
11/16-16 UN	—	3-B12

Fits all nozzle fittings with 11/16" straight thread.



# PIPE, HOSE AND NOZZLE FITTINGS: WASHERS AND SCREEN

## FILTER SCREEN

- 30/30 Stainless Steel Mesh Screen
- For Spray Tips & Garden Hose Fittings



I.D.	O.D.	PART NO.
5/8" I.D.	1" O.D.	W160M

## VINYL WASHER

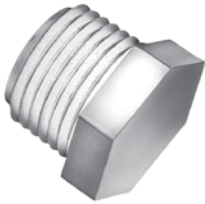
- PVC Material
- For Swivel & Nozzle Nuts



I.D.	O.D.	PART NO.
11/16" I.D.	1" O.D.	W406V

## PIPE PLUG

### PIPE PLUG: W/HEX HEAD



### NYLON

HEX	MPT	PART NO.
5/8"	1/8"-27 NPT	F18
5/8"	1/4"-18 NPT	F14
3/4"	3/8"-18 NPT	F38
15/16"	1/2"-14 NPT	F12
1-1/8"	3/4"-14 NPT	F34
1-3/8"	1"-11-1/2 NPT	F100
1-11/16"	1-1/4"-11-1/2 NPT	F114
2-1/32"	1-1/2"-11-1/2 NPT	F112
2-15/32"	2"-11-1/2 NPT	F200



### POLYPROPYLENE

HEX	MPT	PART NO.
5/8"	1/8"-27 NPT	3-F18
5/8"	1/4"-18 NPT	3-F14
3/4"	3/8"-18 NPT	3-F38
15/16"	1/2"-14 NPT	3-F12
1-1/8"	3/4"-14 NPT	3-F34
1-3/8"	1"-11-1/2 NPT	3-F100
1-11/16"	1-1/4"-11-1/2 NPT	3-F114
2-1/32"	1-1/2"-11-1/2 NPT	3-F112
2-15/32"	2"-11-1/2 NPT	3-F200

### THREAD CODE

**FGHT** – Female Garden Hose  
**FPS** – Female Pipe Straight  
**FPT** – Female Pipe Tapered  
**FST** – Female Straight  
**GH** – Garden Hose

**HB** – Hose Barb  
**MGHT** – Male Garden Hose  
**MST** – Male Straight  
**NPT** – National Pipe Tapered  
**UN** – Unified National  
**MPT** – Male Pipe Thread

### PIPE PLUG: W/SQUARE HEAD



### NYLON

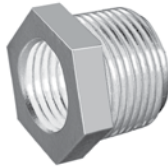
SQ HEAD	MPT	PART NO.
11/16"	3/4"-14 NPT	SP34



### POLYPROPYLENE

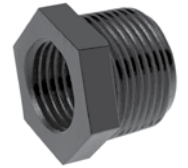
SQ HEAD	MPT	PART NO.
11/16"	3/4"-14 NPT	3-SP34

## REDUCER BUSHING - MPT x FPT



### NYLON

MPT	MPT	PART NO.
1/4"-18 NPT	1/8"-27 NPT	RB1418
3/8"-18 NPT	1/8"-27 NPT	RB3818
3/8"-18 NPT	1/4"-18 NPT	RB3814
1/2"-14 NPT	1/8"-27 NPT	RB1218
1/2"-14 NPT	1/4"-18 NPT	RB1214
1/2"-14 NPT	3/8"-18 NPT	RB1238
3/4"-14 NPT	1/8"-27 NPT	RB3418
3/4"-14 NPT	1/4"-18 NPT	RB3414
3/4"-14 NPT	3/8"-18 NPT	RB3438
3/4"-14 NPT	1/2"-14 NPT	RB3412
1"-11-1/2 NPT	3/8"-18 NPT	RB10038
1"-11-1/2 NPT	1/2"-14 NPT	RB10012
1"-11-1/2 NPT	3/4"-14 NPT	RB10034
1-1/4"-11-1/2 NPT	3/4"-14 NPT	RB11434
1-1/4"-11-1/2 NPT	1"-11-1/2 NPT	RB114100
1-1/2"-11-1/2 NPT	3/4"-14 NPT	RB11234
1-1/2"-11-1/2 NPT	1"-11-1/2 NPT	RB112100
1-1/2"-11-1/2 NPT	1-1/4"-11-1/2 NPT	RB112114
2"-11-1/2 NPT	3/4"-14 NPT	RB20034
2"-11-1/2 NPT	1"-11-1/2 NPT	RB200100
2"-11-1/2 NPT	1-1/4"-11-1/2 NPT	RB200114
2"-11-1/2 NPT	1-1/2"-11-1/2 NPT	RB200112



### POLYPROPYLENE

MPT	MPT	PART NO.
1/4"-18 NPT	1/8"-27 NPT	3-RB1418
3/8"-18 NPT	1/8"-27 NPT	3-RB3818
3/8"-18 NPT	1/4"-18 NPT	3-RB3814
1/2"-14 NPT	1/8"-27 NPT	3-RB1218
1/2"-14 NPT	1/4"-18 NPT	3-RB1214
1/2"-14 NPT	3/8"-18 NPT	3-RB1238
3/4"-14 NPT	1/8"-27 NPT	3-RB3418
3/4"-14 NPT	1/4"-18 NPT	3-RB3414
3/4"-14 NPT	3/8"-18 NPT	3-RB3438
3/4"-14 NPT	1/2"-14 NPT	3-RB3412
1"-11-1/2 NPT	3/8"-18 NPT	3-RB10038
1"-11-1/2 NPT	1/2"-14 NPT	3-RB10012
1"-11-1/2 NPT	3/4"-14 NPT	3-RB10034
1-1/4"-11-1/2 NPT	3/4"-14 NPT	3-RB11434
1-1/4"-11-1/2 NPT	1"-11-1/2 NPT	3-RB114100
1-1/2"-11-1/2 NPT	3/4"-14 NPT	3-RB11234
1-1/2"-11-1/2 NPT	1"-11-1/2 NPT	3-RB112100
1-1/2"-11-1/2 NPT	1-1/4"-11-1/2 NPT	3-RB112114
2"-11-1/2 NPT	3/4"-14 NPT	3-RB20034
2"-11-1/2 NPT	1"-11-1/2 NPT	3-RB200100
2"-11-1/2 NPT	1-1/4"-11-1/2 NPT	3-RB200114
2"-11-1/2 NPT	1-1/2"-11-1/2 NPT	3-RB200112

# TEE

## TEE: FEMALE PIPE THREAD - FPT x FPT



### NYLON

FPT	FPT	PART NO.
1/4"	1/4"/1/4"	TT14
1/4"	1/4"/1/4"	TT14C



### POLYPROPYLENE

FPT	FPT	PART NO.
1/4"	1/4"/1/4"	3-TT14
1/4"	1/4"/1/4"	3-TT14C



# PIPE, HOSE AND NOZZLE FITTINGS:

## TEE

### TEE: FEMALE PIPE THREAD TO BARBED TEE



**NYLON**

FPT	HB X HB	PART NO.
3/4" NPT	3/4" x 3/4"	T34F
1-1/4" NPT	3/4" x 3/4"	T34114F



**POLYPROPYLENE**

FPT	HB X HB	PART NO.
3/4" NPT	3/4" x 3/4"	3-T34F
1-1/4" NPT	3/4" x 3/4"	3-T34114F

### TEE: HOSE BARBS TO MALE STRAIGHT THREAD



**NYLON**

MST	HB X HB	PART NO.
11/16--16 UN	3/8" x 3/8"	NTT38
11/16--16 UN	1/2" x 1/2"	NTT12
11/16--16 UN	5/8" x 5/8"	NTT58
11/16--16 UN	3/4" x 3/4"	NTT34



**POLYPROPYLENE**

MST	HB X HB	PART NO.
11/16--16 UN	3/8" x 3/8"	3-NTT38
11/16--16 UN	1/2" x 1/2"	3-NTT12
11/16--16 UN	5/8" x 5/8"	3-NTT58
11/16--16 UN	3/4" x 3/4"	3-NTT34

### TEE: HOSE BARBS X CENTER HOSE BARB



**NYLON**

HB	HB X HB	PART NO.
1/4"	1/4" x 1/4"	T14
1/4"	3/8" x 3/8"	T1438
3/8"	3/8" x 3/8"	T38
1/2"	3/8" x 3/8"	T1238
3/8"	1/2" x 1/2"	T3812
1/2"	1/2" x 1/2"	T12
3/4"	1/2" x 1/2"	T3412
3/8"	5/8" x 5/8"	T3858
5/8"	5/8" x 5/8"	T58
3/4"	3/4" x 3/4"	T34
1"	1" x 1"	T100
1-1/4"	1-1/4" x 1-1/4"	T114
1-1/2"	1-1/2" x 1-1/2"	T112
2"	2" x 2"	T200

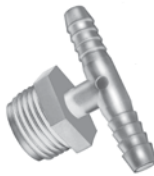


**POLYPROPYLENE**

HB	HB X HB	PART NO.
1/4"	1/4" x 1/4"	3-T14
1/4"	3/8" x 3/8"	3-T1438
3/8"	3/8" x 3/8"	3-T38
1/2"	3/8" x 3/8"	3-T1238
3/8"	1/2" x 1/2"	3-T3812
1/2"	1/2" x 1/2"	3-T12
3/4"	1/2" x 1/2"	3-T3412
3/8"	5/8" x 5/8"	3-T3858
5/8"	5/8" x 5/8"	3-T58
3/4"	3/4" x 3/4"	3-T34
1"	1" x 1"	3-T100
1-1/4"	1-1/4" x 1-1/4"	3-T114
1-1/2"	1-1/2" x 1-1/2"	3-T112
2"	2" x 2"	3-T200



**TEE: MALE GARDEN HOSE THREAD TO HOSE BARBS**



**NYLON**

MGHT	HB X HB	PART NO.
3/4"	3/8" x 3/8"	TD3438
3/4"	1/2" x 1/2"	TD3412
3/4"	5/8" x 5/8"	TD3458
3/4"	3/4" x 3/4"	TD34



**POLYPROPYLENE**

MGHT	HB X HB	PART NO.
3/4"	3/8" x 3/8"	3-TD3438
3/4"	1/2" x 1/2"	3-TD3412
3/4"	5/8" x 5/8"	3-TD3458
3/4"	3/4" x 3/4"	3-TD34

**TEE: MALE PIPE THREAD TO HOSE BARBS**



**NYLON**

MPT	HB X HB	PART NO.
1/8"-27 NPT	1/4" x 1/4"	T1814T
1/4"-18 NPT	1/4" x 1/4"	T14T
1/4"-18 NPT	3/8" x 3/8"	T1438T
1/4"-18 NPT	1/2" x 1/2"	T1412T
3/8"-18 NPT	1/4" x 1/4"	T3814T
3/8"-18 NPT	3/8" x 3/8"	T38T
3/8"-18 NPT	1/2" x 1/2"	T3812T
1/2"-14 NPT	3/8" x 3/8"	T1238T
1/2"-14 NPT	1/2" x 1/2"	T12T
1/2"-14 NPT	5/8" x 5/8"	T1258T
1/2"-14 NPT	3/4" x 3/4"	T1234T
3/4"-14 NPT	3/8" x 3/8"	T3438T
3/4"-14 NPT	1/2" x 1/2"	T3412T
3/4"-14 NPT	5/8" x 5/8"	T3458T
3/4"-14 NPT	3/4" x 3/4"	T34T



**POLYPROPYLENE**

MPT	HB X HB	PART NO.
1/8"-27 NPT	1/4" x 1/4"	3-T1814T
1/4"-18 NPT	1/4" x 1/4"	3-T14T
1/4"-18 NPT	3/8" x 3/8"	3-T1438T
1/4"-18 NPT	1/2" x 1/2"	3-T1412T
3/8"-18 NPT	1/4" x 1/4"	3-T3814T
3/8"-18 NPT	3/8" x 3/8"	3-T38T
3/8"-18 NPT	1/2" x 1/2"	3-T3812T
1/2"-14 NPT	3/8" x 3/8"	3-T1238T
1/2"-14 NPT	1/2" x 1/2"	3-T12T
1/2"-14 NPT	5/8" x 5/8"	3-T1258T
1/2"-14 NPT	3/4" x 3/4"	3-T1234T
3/4"-14 NPT	3/8" x 3/8"	3-T3438T
3/4"-14 NPT	1/2" x 1/2"	3-T3412T
3/4"-14 NPT	5/8" x 5/8"	3-T3458T
3/4"-14 NPT	3/4" x 3/4"	3-T34T

**WASHERS AND SCREEN**

**FILTER SCREEN**

- 30/30 Stainless Steel Mesh Screen
- For Spray Tips & Garden Hose Fittings



I.D.	O.D.	PART NO.
5/8" I.D.	1" O.D.	W160M

**VINYL WASHER**

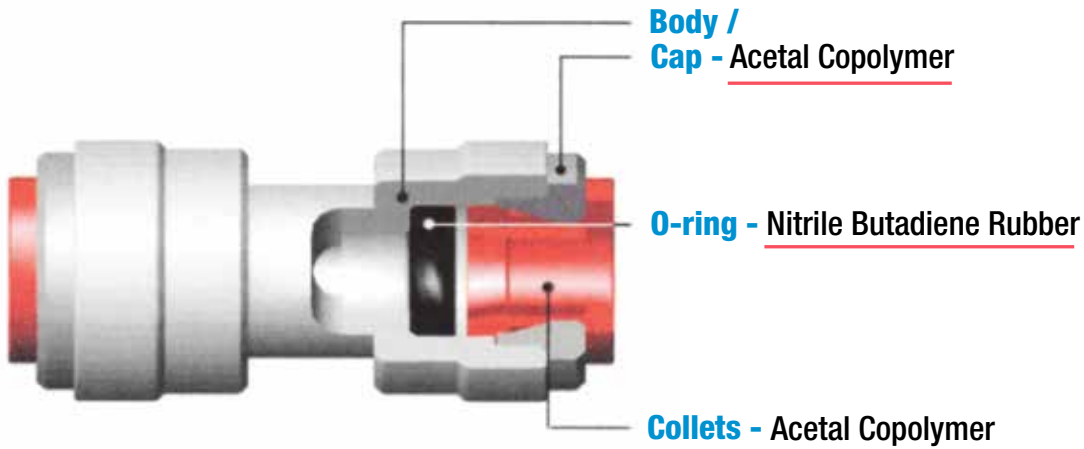
- PVC Material
- For Swivel & Nozzle Nuts



I.D.	O.D.	PART NO.
11/16" I.D.	1" O.D.	W406V



# PUSH-IN TUBE FITTINGS



## FEATURES

- FDA / NSF compliant
- Quick and easy to use and re-use
- Resists inorganic chemicals, oils, fats, and synthetic detergents

## USE WITH (TUBE)

- Polyethylene
- Polyurethane
- Polypropylene
- Nylon

## SUITABLE FOR:

- **Water & foods use:** Products are manufactured from safe, non-toxic materials meeting the requirements of FDA and NSF-51, 61. Our products are widely used in water purification, food/beverage and pneumatic systems.
- **Function & Quality:** Provides quick and convenient assembly - saving time & expense. Our quality system ensures customers a superior level of product quality. Defects are easily detectable and maintenance is easy with its easy dismantling for access.

## MATERIALS

- Fitting – Acetal copolymer (grey)
- O-ring – Nitrile rubber

## APPLICATIONS

- Water conditioning
- Dispensing equipment
- Agricultural
- Industrial & vacuum systems

- **Collet Design:** The unique oval collet design is superior and more practical, and is an improvement welcomed by our world-wide customers in all industries.
- **Applications:** Beyond water and food use, fittings can be used with air, gases, vacuum, & liquids. And all connections can be assembled & disassembled repeatedly. A full range of sizes are available for most applications.

# PUSH-IN TUBE FITTINGS

## ADAPTER, FEMALE NPTF (TUBE OD X THREAD)



TUBE O.D.	NPTF	PART NO.
1/4"	1/8"	AFA0402
1/4"	1/4"	AFA0404
3/8"	1/4"	AFA0604

## ADAPTER, STEM (STEM O.D. X FPT THREAD)



STEM O.D.	NPTF	PART NO.
5/32"	1/8"	ASA0102
5/32"	1/4"	ASA0104
3/16"	1/8"	ASA0302
1/4"	1/8"	ASA0402
1/4"	1/4"	ASA0404
5/16"	1/8"	ASA0502
5/16"	1/4"	ASA0504
5/16"	3/8"	ASA0506
3/8"	1/4"	ASA0604
3/8"	3/8"	ASA0606
1/2"	3/8"	ASA0706
1/2"	1/2"	ASA0707

## CONNECTOR, ELBOW BARB (STEM O.D. X TUBE I.D.)



STEM O.D.	TUBE I.D.	PART NO.
1/4"	1/4"	ATEB0404
1/4"	5/16"	ATEB0405
5/16"	1/4"	ATEB0504
5/16"	5/16"	ATEB0505
3/8"	1/4"	ATEB0604
3/8"	5/16"	ATEB0605
3/8"	3/8"	ATEB0606

## CONNECTOR, MALE NPTF (TUBE O.D. X THREAD)



TUBE O.D.	MALE NPTF	PART NO.
1/4"	1/8"	AMC0402
1/4"	1/4"	AMC0404
1/4"	3/8"	AMC0406
3/8"	1/8"	AMC0602
3/8"	1/4"	AMC0604
3/8"	3/8"	AMC0606
3/8"	1/2"	AMC0607
1/2"	3/8"	AMC0706
1/2"	1/2"	AMC0707

## CONNECTOR, STRAIGHT (STEM X BARB)



STEM O.D.	TUBE I.D.	PART NO.
1/4"	1/4"	ATBC0404
3/8"	3/8"	ATBC0606
1/2"	1/2"	ATBC0707

## CONNECTOR, UNION (TUBE O.D. X TUBE O.D.)



TUBE O.D.	TUBE O.D.	PART NO.
1/4"	1/4"	AUC0404
3/8"	1/4"	AUC0604
3/8"	3/8"	AUC0606
1/2"	3/8"	AUC0706
1/2"	1/2"	AUC0707

## DIVIDER, TWO-WAY



TUBE IN	TUBE OUT	PART NO.
5/32"	5/32"	ATWD0101
1/4"	1/4"	ATWD0404
5/16"	5/16"	ATWD0505
3/8"	5/16"	ATWD0605
3/8"	3/8"	ATWD0606
3/8"	1/2"	ATWD0607
1/2"	1/2"	ATWD0707



# PUSH-IN TUBE FITTINGS

**DIVIDER, THREE-WAY**  
(TUBE O.D. DECREASING  
TO TUBE O.D.)



INCOMING O.D.	OUTGOING O.D.s	PART NO.
3/8"	1/4"	ATHWD0604
3/8"	3/8"	ATHWD0606
1/2"	3/8"	ATHWD0706

**ELBOW, UNION**  
(TUBE O.D. x TUBE O.D.)



TUBE O.D.	TUBE O.D.	PART NO.
1/4"	1/4"	AEU0404
3/8"	1/4"	AEU0604
3/8"	3/8"	AEU0606
1/2"	3/8"	AEU0706
1/2"	1/2"	AEU0707

**ELBOW, MALE NPTF**  
(TUBE O.D. x THREAD)



TUBE O.D.	NPTF	PART NO.
1/4"	1/8"	AME0402
1/4"	1/4"	AME0404
1/4"	3/8"	AME0406
3/8"	1/4"	AME0604
3/8"	3/8"	AME0606
1/2"	3/8"	AME0706
1/2"	1/2"	AME0707

**ELBOW, UNION**  
(TUBE O.D. x STEM O.D.)



TUBE O.D.	STEM O.D.	PART NO.
5/32"	5/32"	ATEU0101
3/16"	3/16"	ATEU0303
3/16"	3/8"	ATEU0306
1/4"	1/4"	ATEU0404
1/4"	3/8"	ATEU0406
5/16"	5/16"	ATEU0505
5/16"	3/8"	ATEU0506
3/8"	3/8"	ATEU0606
3/8"	1/2"	ATEU0607
1/2"	1/2"	ATEU0707

**ELBOW, MALE SWIVEL, NPTF**  
(TUBE O.D. x  
THREAD)



TUBE O.D.	NPTF	PART NO.
1/4"	1/8"	AMES0402
1/4"	1/4"	AMES0404
3/8"	1/4"	AMES0604
3/8"	3/8"	AMES0606
1/2"	3/8"	AMES0706
1/2"	1/2"	AMES0707

**PLUG (STEM O.D.)**



STEM O.D.	PART NO.
5/32"	APL01
3/16"	APL03
1/4"	APL04
5/16"	APL05
3/8"	APL06
1/2"	APL07

# PUSH-IN TUBE FITTINGS

**REDUCER**  
(TUBE O.D. x STEM O.D.)



TUBE O.D.	STEM O.D.	PART NO.
5/32"	1/4"	ARD0104
3/16"	5/16"	ARD0305
3/16"	3/8"	ARD0306
1/4"	5/16"	ARD0405
1/4"	3/8"	ARD0406
5/16"	3/8"	ARD0506
5/16"	1/2"	ARD0507
3/8"	1/2"	ARD0607

**UNION, BULKHEAD**  
(TUBE O.D. x TUBE O.D.  
w/THREAD SIZE)



TUBE O.D.	TUBE O.D.	THREAD SIZE	PART NO.
5/32"	5/32"	w/M16xP1	ABU0101
3/16"	3/16"	w/M16xP1	ABU0303
1/4"	1/4"	w/M16xP1	ABU0404
1/4"	3/8"	w/M20xP1.5	ABU0406
5/16"	5/16"	w/M20xP1.5	ABU0505
3/8"	1/4"	w/M20xP1.5	ABU0604
3/8"	3/8"	w/M20xP1.5	ABU0606
1/2"	1/2"	w/M27xP1.5	ABU0707

**TEE, MALE SWIVEL**  
(TUBE O.D. RUN x  
MNPT BRANCH X)



TUBE O.D.	MNPT	PART NO.
5/32"	1/8"	AMTS0102
5/32"	1/4"	AMTS0104
3/16"	1/8"	AMTS0302
1/4"	1/8"	AMTS0402
1/4"	1/4"	AMTS0404
5/16"	1/8"	AMTS0502
5/16"	1/4"	AMTS0504
5/16"	3/8"	AMTS0506
3/8"	1/4"	AMTS0604
3/8"	3/8"	AMTS0606
1/2"	3/8"	AMTS0706
1/2"	1/2"	AMTS0707

**TEE, UNION**  
(O.D. BRANCH x O.D. RUN)



TUBE O.D. BRANCH	TUBE O.D. RUN	PART NO.
1/4"	1/4"	ATU040404
1/4"	3/8"	ATU060604
3/8"	3/8"	ATU060606
3/8"	1/2"	ATU070706
1/2"	1/2"	ATU070707

## THREAD CODE

**FGHT** – Female Garden Hose  
**FPS** – Female Pipe Straight  
**FPT** – Female Pipe Tapered  
**FST** – Female Straight  
**GH** – Garden Hose

**HB** – Hose Barb  
**MGHT** – Male Garden Hose  
**MST** – Male Straight  
**NPT** – National Pipe Tapered  
**UN** – Unified National  
**MPT** – Male Pipe Thread



# QUICK COUPLING CONNECTORS

- **40AC Series connectors** offer 1/4" flow capacity and are manufactured in a high performance natural white, acetal material. Connector materials are resistant to most chemicals and are included on FDA & NSF GRAS lists. Temperature range -40°F to 180°F. Maximum pressure 120 psi.



- **40AC and 40CB couplings** interconnect with each other and are compatible with other 1/4" flow, metal latch and spring connectors.

- **40CB Series connectors** offer 1/4" flow capacity and are manufactured from chrome plated brass. 40CB Series connectors are available with internal shut-off valves or straight through configurations. 40CB Connectors are very durable and offer high performance ratings. Temperature range -40°F to 120°F. Maximum pressure 250 psi.



- **50AC Series connectors** offer 1/4" flow capacity and feature an easy to use plastic thumb latch. These connectors are manufactured in a high performance natural white, acetal material. They are available with or without internal shut-off valves. The connector materials are resistant to most chemicals and are included on FDA & NSF GRAS lists. 50AC and 50GP couplings interconnect with each other and are compatible with other 1/4" flow, plastic latch-type connectors. Temperature range -40°F to 180°F. Maximum pressure 120 psi.



- **50AC and 50GP couplings** interconnect with each other and are compatible with other 1/4" flow, plastic latch and spring connectors.

- **50GP Series connectors** offer 1/4" flow capacity, are manufactured from a high performance glass-filled, pure white polypropylene, and are designed for applications that require extra durability. Connector materials are included on FDA & NSF GRAS lists and incorporates excellent chemical resistance properties. Temperature range 32°F to 180°F. Maximum pressure 120 psi.



- **65GP Series connectors** offer 1/2" flow capacity and are manufactured from a high performance glass-filled, pure white polypropylene, which is included on FDA & NSF GRAS lists. 65GP connectors have a full flow, non-valved, smooth internal bore that allows for maximum flow with minimal turbulence. 65GP connectors are extremely durable and are well suited for applications that require chemical resistance. Temperature range 32°F to 180°F. Maximum pressure 120 psi.



- **65GP Series connectors** are compatible with other 1/2" flow, plastic latch and spring connectors.

# QUICK COUPLING CONNECTORS

## PLUG ELBOW; 1/4" FLOW

### 40AC SERIES – ACETAL

#### NON-VALVED

CONNECTION SIZE	PART NO.
1/4" HB	40AC-PB4-04
3/8" HB	40AC-PB4-06

#### VALVED

CONNECTION SIZE	PART NO.
1/4" HB	40ACV-PB4-04
3/8" HB	40ACV-PB4-06



### 50AC SERIES – ACETAL

#### NON-VALVED

CONNECTION SIZE	PART NO.
1/4" HB	50AC-PB4-04
3/8" HB	50AC-PB4-06
3/8" PTF	50AC-PB10-06

#### VALVED

CONNECTION SIZE	PART NO.
1/4" HB	50ACV-PB4-04
3/8" HB	50ACV-PB4-06
3/8" PTF	50ACV-PB10-06



### 50GP SERIES – GLASS-FILLED POLYPROPYLENE

#### NON-VALVED

CONNECTION SIZE	PART NO.
3/8" H.B.	50GP-PF7-06



**PART NUMBER GUIDE**  
See Page 65

## PLUG, IN-LINE; 1/4" FLOW

### 40AC SERIES – ACETAL

#### NON-VALVED

CONNECTION SIZE	PART NO.
1/4" PTF	40AC-PB9-04
1/4" HB	40AC-PB2-04
5/16" HB	40AC-PB2-05
3/8" HB	40AC-PB2-06

#### VALVED

CONNECTION SIZE	PART NO.
1/4" PTF	40ACV-PB9-04
1/4" HB	40ACV-PB2-04
5/16" HB	40ACV-PB2-05
3/8" HB	40ACV-PB2-06



PTF

### 50AC SERIES – ACETAL

#### NON-VALVED

CONNECTION SIZE	PART NO.
1/4" PTF	50AC-PB9-04
1/4" HB	50AC-PB2-04
3/8" HB	50AC-PB2-06

#### VALVED

CONNECTION SIZE	PART NO.
1/4" PTF	50ACV-PB9-04
1/4" HB	50ACV-PB2-04
5/16" HB	50ACV-PB2-05
3/8" HB	50ACV-PB2-06



HB



# QUICK COUPLING CONNECTORS

## PLUG, IN-LINE; 1/4" FLOW **CONTINUED**

### 40 CB SERIES – CHROME PLATED BRASS



#### NON-VALVED

CONNECTION SIZE	PART NO.
1/4" HB	40CB-PB2-04
5/16" HB	40CB-PB2-05
3/8" HB	40CB-PB2-06

#### VALVED

CONNECTION SIZE	PART NO.
1/4" HB	40CBV-PB2-04
5/16" HB	40CBV-PB2-05
3/8" HB	40CBV-PB2-06

### 50 GP SERIES – GLASS-FILLED POLYPROPYLENE



#### NON-VALVED

CONNECTION SIZE	PART NO.
1/4" HB	50GP-PE5-04
3/8" HB	50GP-PE5-06

### PART NUMBER GUIDE

See Page 65

## PLUG, IN-LINE; 1/2" FLOW

### 65GP SERIES – GLASS FILLED POLYPROPYLENE



#### NON-VALVED

CONNECTION SIZE	PART NO.
1/2" H.B.	65GP-PE2-08

## PLUG, MALE THREAD; 1/4" FLOW

### 40AC SERIES – ACETAL



#### NON-VALVED

CONNECTION SIZE	PART NO.
1/4" MNPT	40AC-PB1-04
3/8" MNPT	40AC-PB1-06

#### VALVED

CONNECTION SIZE	PART NO.
1/4" MNPT	40ACV-PB1-04
3/8" MNPT	40ACV-PB1-06

### 50AC SERIES – ACETAL



#### NON-VALVED

CONNECTION SIZE	PART NO.
1/4" MNPT	50AC-PB1-04
3/8" MNPT	50AC-PB1-06

#### VALVED

CONNECTION SIZE	PART NO.
1/4" MNPT	50ACV-PB1-04
3/8" MNPT	50ACV-PB1-06



# QUICK COUPLING CONNECTORS

## PLUG, MALE THREAD; 1/4" FLOW CONTINUED

### 50GP SERIES – GLASS-FILLED POLYPROPYLENE

#### NON-VALVED

CONNECTION SIZE	PART NO.
1/4" MNPT	50GP-PE1-04



## PLUG, MALE THREAD; 1/2" FLOW

### 65GP SERIES – GLASS-FILLED POLYPROPYLENE

#### NON-VALVED

CONNECTION SIZE	PART NO.
1/2" MNPT	65GP-PE1-08



## SOCKET, ELBOW, HOSE BARB; 1/4" FLOW

### 50GP SERIES – GLASS-FILLED POLYPROPYLENE

#### NON-VALVED

CONNECTION SIZE	PART NO.
3/8" HB	50GP-S7-06



## SOCKET, IN-LINE PTF & HB; 1/4" FLOW

### 40AC SERIES – ACETAL

#### NON-VALVED

CONNECTION SIZE	PART NO.
1/4" PTF	40AC-S9-04
1/4" HB	40AC-S2-04
5/16" HB	40AC-S2-05
3/8" HB	40AC-S2-06



PTF

#### VALVED

CONNECTION SIZE	PART NO.
1/4" PTF	40ACV-SB9-04
1/4" HB	40ACV-SB2-04
5/16" HB	40ACV-SB2-05
3/8" HB	40ACV-SB2-06



HB



# QUICK COUPLING CONNECTORS

## SOCKET, IN-LINE, HOSE BARB; 1/4" FLOW CONTINUED

### 40CB SERIES – CHROME PLATED BRASS



#### NON-VALVED

CONNECTION SIZE	PART NO.
1/4" HB	40CB-S2-04
5/16" HB	40CB-S2-05
3/8" HB	40CB-S2-06

#### VALVED

CONNECTION SIZE	PART NO.
1/4" HB	40CBV-SB2-04
5/16" HB	40CBV-SB2-05
3/8" HB	40CBV-SB2-06

### 50AC SERIES – ACETAL



#### NON-VALVED

CONNECTION SIZE	PART NO.
1/4" PTF	50AC-S9-04-LB
1/4" HB	50AC-S2-04
3/8" HB	50AC-S2-06

#### VALVED

CONNECTION SIZE	PART NO.
1/4" PTF	50ACV-SB9-04
1/4" HB	50ACV-SB2-04
5/16" HB	50ACV-SB2-05
3/8" HB	50ACV-SB2-06

### 50GP SERIES – GLASS-FILLED POLYPROPYLENE



#### NON-VALVED

CONNECTION SIZE	PART NO.
1/4" HB	50GP-S5-04
3/8" HB	50GP-S5-06

#### VALVED

CONNECTION SIZE	PART NO.
3/8" HB	50GPV-SE5-06

## SOCKET, IN-LINE, HOSE BARB; 1/2" FLOW

### 65GP SERIES – GLASS-FILLED POLYPROPYLENE



#### NON-VALVED

CONNECTION SIZE	PART NO.
3/4" H.B.	65GP-S2-12

# QUICK COUPLING CONNECTORS

## SOCKET, MALE THREAD; 1/4" FLOW

### 40AC SERIES – ACETAL

#### NON-VALVED

CONNECTION SIZE	PART NO.
1/4" MNPT	40AC-S1-04
3/8" MNPT	40AC-S1-06

#### VALVED

CONNECTION SIZE	PART NO.
1/4" MNPT	40ACV-SB1-04
3/8" MNPT	40ACV-SB1-06



### 50AC SERIES – ACETAL

#### NON-VALVED

CONNECTION SIZE	PART NO.
1/4" MNPT	50AC-S1-04

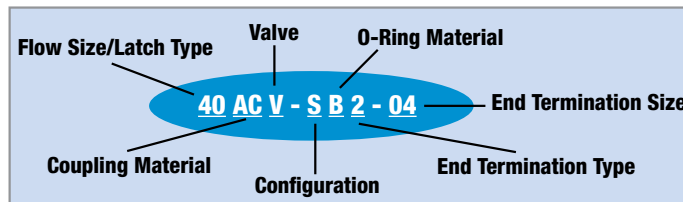
#### VALVED

CONNECTION SIZE	PART NO.
1/4" MNPT	50ACV-SB1-04



### 50GP SERIES – GLASS-FILLED POLYPROPYLENE

CONNECTION SIZE	PART NO.
1/4" MNPT	50GP-S1-04



### PART NUMBER GUIDE

Flow Size/ Latch Type	Coupling Material	Valve	Configuration	O-Ring Material	End Termination Type	End Termination Size
40 = 1/4 flow	AC = Acetal	V = Valved	S = Socket	B = Buna-N	1 = Male Thread MNPT	04 = 1/4
50 = 1/4 flow (plastic latch)	CB = Chrome/Brass	Default is non-valved	P = Plug	V = Viton	2 = In-line Hose Barb	06 = 3/8
65 = 1/2 flow (plastic latch)	GP = Glass Filled Polypropylene				4 = Elbow Hose Barb	08 = 1/2
					5 = Single Hose Barb	
					7 = Single HB Elbow	
					9 = In-line Poly Tube Fitting	
					10 = Elbow Poly Tube Fitting	



## BVI-6™ THREAD SEAL

### FEATURES

- BVI-6 Thread Seal is an industrial adhesive sealant formulated to resist sagging, dripping and running.
- The adhesive offers exceptional bonding for many plastics and between wood, metal, glass, fiberglass, ceramics, masonry, concrete, asphalt, leather, rubber and vinyl.
- Thread Seal remains flexible in cold temperatures and is highly resistant to vibration
- Recommended on threads of 2" and larger
- Cans have application brush

SIZE	DESCRIPTION	PART NO.
1 Pint	Non-Sag Sealant/Adhesive	BVI-6
1/2 Pint	Non-Sag Sealant/Adhesive	BVI-6-8
1/2 Pint	Thinner	BVI-6-8T
1/2" x 520"	Teflon Tape	BVI-TT

### APPLICATIONS

- Plastics & Rubber Goods
- Plant Maintenance
- Residential
- School
- Office
- Tools and Fasteners
- Construction & Carpentry
- Electrical



## CAM COUPLER REPLACEMENT PARTS

SIZE	DESCRIPTION	PART NO.
1/2", 3/4", 1"	Hairpin	25050
1-1/4", 1-1/2", 2"	Hairpin	25550
Small	Handle, SS	24030SS
Medium	Handle, SS	24230SS
Large	Handle, SS	24730SS
Small	Handle, Plastic	24030
Medium	Handle, Plastic	24230
Large	Handle, Plastic	24730
4", three-handle style	3-Handle Style Handle	61596
Medium	Latch	200LNB
Large	Latch	300LNB
1/2", 3/4"	Pin, Cam Lever	24050
1" Med Duty	Pin, Cam Lever	24000
1" Heavy Duty	Pin, Cam Lever	24250
1-1/4", 1-1/2"	Pin, Cam Lever	24450
2"	Pin, Cam Lever	24550
3", 4"	Pin, Cam Lever	24750
Small	Ring	24140
Medium	Ring	24540
Large	Ring	24740

See page 32 for Replacement Gaskets



## BALL VALVE REPAIR KIT

### KIT INCLUDES:

- 1 Ball
- 2 Seats
- 1 Upper Bearing
- 1 Lower Bearing
- 1 Viton O-Ring
- Instructions

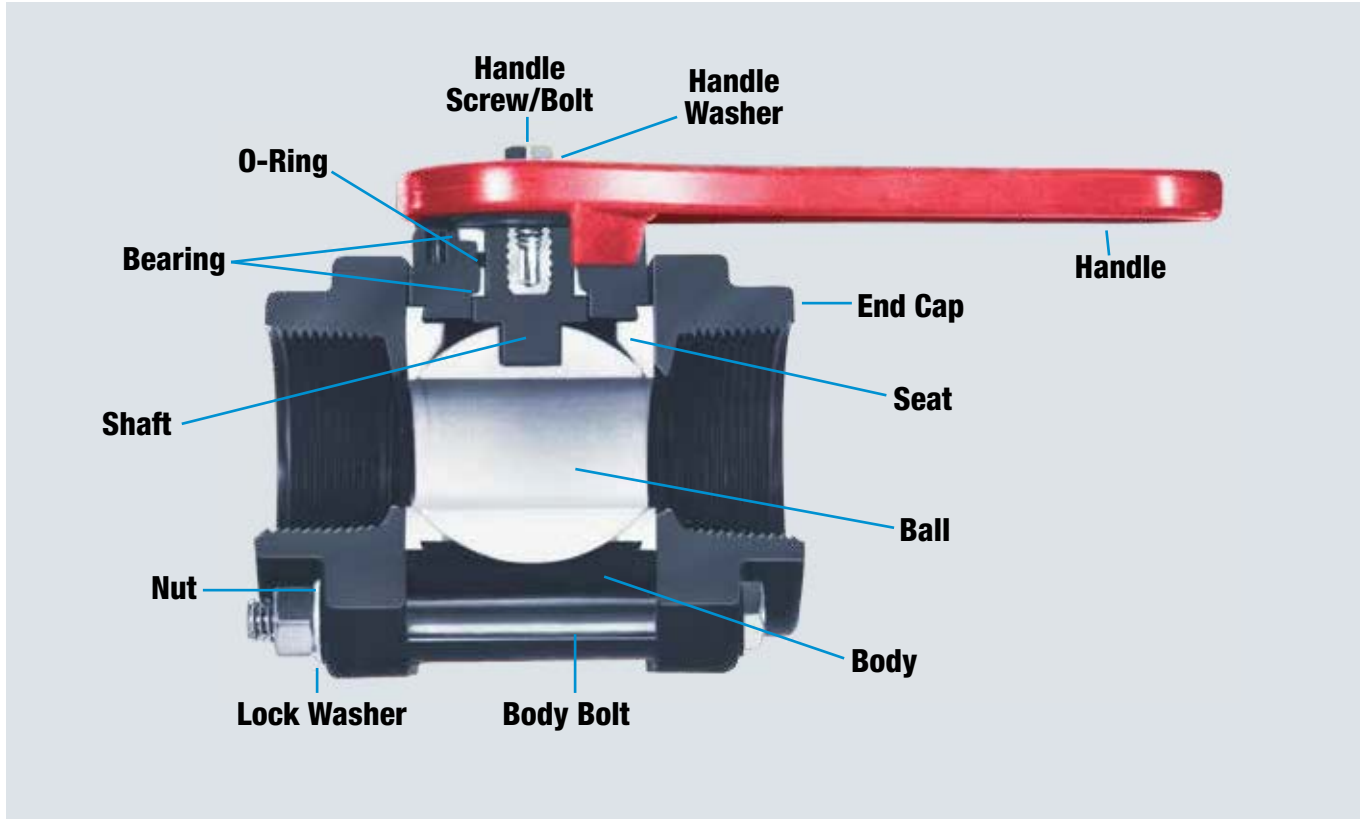
SIZE	DESCRIPTION	PART NO.
1/2" - 1"	1/2" FP, 3/4" FP, 1" SP	4289A-20
1"	*1" FP	4289Y-20
1-1/4" - 2"	1-1/4" FP, 1-1/2" FP, 2" SP	4289C-20
2"	2" FP	4289E-20
2-1/2" - 3"	2-1/2" FP, 3" SP	4289D-20
3"	*3" FP	4289Z-20

\* Bearings not required for 1" FP & 3" FP valves



# REPLACEMENT PARTS

## BALL VALVES



### 1/2", 3/4" FULL PORT AND 1" STD PORT BALL VALVES

DESCRIPTION	PART NO.
Ball	4B100-00
Bearing, Upper/Lower	4B300-20
Body	4B200-00
Bolt, Body	4H000-00
Bolt, Handle, 8/32" x 1/2"	4H030-10
End Cap, 1/2" Ball Valve	4E100-00
End Cap, 3/4" Ball Valve	4E101-00
End Cap, 1" Ball Valve	4E102-00
Handle	4L100-00
Lockwasher, 1/4"	4H014-00
O-Ring	4S200-00
Seat	4S100-20
Shaft	4S300-00
1/4" Hex Nut	4H026-00



### 1" FULL PORT BALL VALVES

DESCRIPTION	PART NO.
Ball	4H369-00
Body	4H384-00
Body Bolt, Lockwasher and Nut	4H422-00
End Cap w/Teflon Seat	4H372-00
Handle	4H722-00
O-Ring, Body	4H379-00
Screw, handle	4H347-00
Shaft w/Viton O-Ring	4H446-00

## BALL VALVES CONTINUED

### 1-1/4", 1-1/2" FULL PORT AND 2" STD PORT BALL VALVES



DESCRIPTION	PART NO.
Ball	4B101-00
Bearing, Lower	4B301-20
Bearing, Upper	4H013-20
Body	4B201-00
Bolt, Body	4H001-00
Bolt, Handle 1/4" x 5/8"	4H008-00
End Cap, 1-1/4" FP	4E122-00
End Cap, 1-1/2" SP	4E103-00
End Cap, 2" SP	4E104-00
Handle	4L101-00
O-Ring	4H038-00
Seat	4S101-20
Shaft	4S301-00
Washer, Handle 1/4" x 1"	4H016-10F

### 2-1/2" FULL PORT AND 3" STD PORT BALL VALVES



DESCRIPTION	PART NO.
Ball	4B102-00
Bearing, Upper/Lower	4B302-20
Body	4B202-00
Bolt, Body--3/8" x 5" Cad	4H009-00
Bolt, Handle 3/8" x 1/2" Cad	4H029-10
End Cap 3" Ball Valve	4E105-00
End Cap Flange	4E110-00
End Cap, 2-1/2" Ball Valve	4E123-00
Handle, 3" SP, Red	4L102-00
Lockwasher Internal	4H019-00
Nut, 3/8" x 7/32" Cad	4H027-00
O-Ring, Shaft	4H039-00
Seat	4S102-20
Shaft	4S302-00
Washer, Handle--1-1/2" Cad	4H011-10

### 2" FULL PORT BALL VALVES



DESCRIPTION	PART NO.
Ball	4B103-00
Body	4B203-00
End Cap	4E112-00
Lockwasher, 3/8" Cad	4H017-00
Nut 1/4" Hex	4H026-00
Nut, 3/8" x 21/64" Cad	4H024-00
Seat	4S103-20
Shaft--2" FP	4S303-00

### 3" FULL PORT BALL VALVES



DESCRIPTION	PART NO.
Ball	4H392-00
Body	4H387-00
Body Bolt, Lockwasher and Nut	4H367-00
End Cap, Teflon Seat and O-Ring	4H443-00
O-Ring Body	4H382-00
Shaft w/Viton O-Ring	4H358-00
Handle, 3" SP, Red	4L102-00

### 2" FP, FACTORY ASSEMBLED BALL VALVE OPTIONS



DESCRIPTION	PART NO.
End Cap -- MPT	4E127
End Cap -- Male Adapter	4E128

### 4" FULL PORT BALL VALVES



DESCRIPTION	PART NO.
Ball	4H824-00
Body	4H823-00
Body Bolt, Lockwasher & Nut	4H819-00
End Cap w/Teflon Seat	4H820-00
Handle	4H838-00
Handle Bolt, Washer & Nut	4H349-10
O-Ring Body	4H822-00
O-Ring, Shaft	4H817-00
Seat	4H821-00
Shaft w/Viton O-Ring	4H818-00



# REPLACEMENT PARTS

## BALL VALVES **CONTINUED**



### 2" COMPACT BALL VALVES

DESCRIPTION	PART NO.
End Flange w/Teflon Seat	62316
Flanged End Flange w/Teflon	62930
Handle, Blue	61723
Handle, Yellow Blank	61785
Lg Body EPDM O-Ring Seal	62319
Male Coupler End Flange w/	62318
Male End Flange w/Teflon Seat	62317
SS Bolt, Hex Nut, & Lock	61424
Stem Cap Screw & Flat Washer	61350
Stem O-ring, Viton	61425
Teflon Seat	62074
Valve Ball	62312
Valve Body	62315
Valve Stem w/Viton O-ring	61360



### RATCHET RETURN REPLACEMENT PARTS

DESCRIPTION	PART NO.
Anchor	4H036
Body	4B204
Bolt, Handle	4H029
Handle	4L104
Indicator	4H050
Pin, Body	4H033
Pin, Handle	4H034
Ratchet	4H040
Spacer	4H037
Spring, 1/2"	4H041
Spring, 3"	4H042
Washer	4H012



### POLY NOZZLE FOR 1-1/2" FULL PORT AND 2" STD PORT BALL VALVES

DESCRIPTION	PART NO.
End Cap Nozzle	4E109-00
Handle	4L103-00
Pin, 3/16" x 1/2"	4H035-00
Spout, 1-1/2"	4S400-00
End Cap, 1-1/2" SP	4E103-00
End Cap, 2" SP	4E104-00



### SINGLE UNION BALL VALVE REPLACEMENT HANDLES (BLUE)

DESCRIPTION	PART NO.
1/2"	60444
3/4"	60445
1"	60446
1-1/4"	60447
1-1/2"	60448
2"	60449
3"	60450




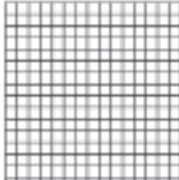
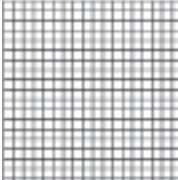
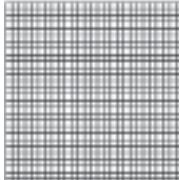
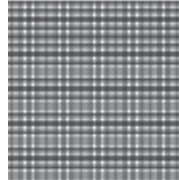
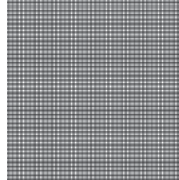
### POLY NOZZLE FOR 2" FULL PORT BALL VALVES

SIZE	DESCRIPTION	PART NO.
2"	End Cap, Nozzle	4E113-00
2"	Spout, 2"	4S401-00



## STRAINERS/SCREENS

### MESH SIZE PARTICLE SIZE (opening)

.132"	.060"	.051"	.034"	.015"	.007"
					
<b>6</b>	<b>12</b>	<b>14</b>	<b>20</b>	<b>40</b>	<b>80</b>

## T-LINE STRAINERS

### T-LINE STRAINERS

SIZE	DESCRIPTION	PART NO.
1/2"	Gasket (O-Ring)	4G537-00
1/2"	20 Mesh Screen	4S512-20
1/2"	40 Mesh Screen	4S512-40
1/2"	80 Mesh Screen	4S512-80
1/2"	1/2" LST Body/Cap w/o Screen	LST050-NS
3/4"	3/4" LST Body/Cap w/o Screen	LST075-NS
1"	1" LST Body/Cap w/o Screen	LST100-NS



## STANDARD STRAINER (LSY SERIES)

### REPLACEMENT SCREENS

DESCRIPTION	PART NO.
<b>1/2" - 3/4" Strainers</b>	
Gasket (O-Ring)	4G452-00
20 Mesh Screen	4S509-20
40 Mesh Screen	4S509-40
80 Mesh Screen	4S509-80
<b>1" - 1-1/4" Strainers</b>	
Gasket (O-Ring)	4G750-00
20 Mesh Screen	4S510-20
40 Mesh Screen	4S510-40
80 Mesh Screen	4S510-80
<b>1-1/2" - 2" Strainers</b>	
Gasket (O-Ring)	4G561-00
12 Mesh Screen	4S511-12
20 Mesh Screen	4S511-20
40 Mesh Screen	4S511-40
80 Mesh Screen	4S511-80



### BODY/CAPS

SIZE	DESCRIPTION	PART NO.
1/2"	1/2" Body/Cap w/o Screen	LSY050-NS
3/4"	3/4" Body/Cap w/o Screen	LSY075-NS
1"	1" Body/Cap w/o Screen	LSY100-NS
1-1/4"	1-1/4" Body/Cap w/o Screen	LSY125-NS
1-1/2"	1-1/2" Body/Cap w/o Screen	LSY150-NS
2"	2" Body/Cap w/o Screen	LSY200-NS



# REPLACEMENT PARTS

## HEAVY DUTY, HIGH CAPACITY Y-STRAINER



### 1-1/2", 2" STRAINER PARTS

DESCRIPTION	PART NO.
Body, Heavy Duty Line Strainer	4B211-00
Cap, Strainer Body	4E126-00
Cap - w/plug & O-ring	4E129-00
O-Ring, Small	4H055-00
O-Ring, Large	4H051-00
Reducer Bushing	40400-00



### 3" STRAINER PARTS

DESCRIPTION	PART NO.
Body/Cap w/o Screen	300A-NS
O-Ring, Body	4H100-636
Cap - ADC Strainer	4H843
O-Ring, Cap Plug	4H840
Plug, 1/2" NPT	70884



### 1-1/2", 2" STRAINER SCREENS

DESCRIPTION	PART NO.
5", 14 Mesh Screen	4S501
5", 20 Mesh Screen	4S505
5", 40 Mesh Screen	4S502
5", 80 Mesh Screen	4S503
5", 100 Mesh Screen	4S504



### 3" STRAINER SCREENS

DESCRIPTION	PART NO.
9-1/2", 6 Mesh Screen	4S513-6
9-1/2", 12 Mesh Screen	4S513-12
9-1/2", 20 Mesh Screen	4S513-20
9-1/2", 40 Mesh Screen	4S513-40

## QUICK CLEAN, HIGH CAPACITY Y-STRAINER



### 2" Y-STRAINER PARTS

DESCRIPTION	PART NO.
Adaptor	300A-ADP
3" Dust Cap	300DC
O-Ring, Cap	4H100-236
8", 6 Mesh Screen	4S508-6
8", 14 Mesh Screen	4S508-14
8", 30 Mesh Screen	4S508-30
8", 40 Mesh Screen	4S508-40
8", 80 Mesh Screen	4S508-80



### 3" Y-STRAINER PARTS

DESCRIPTION	PART NO.
O-Ring, Cap Adapter Fitting	4H839
13-5/8", 1/16" Perf Screen	4S514-062
13-5/8", 1/8" Perf Screen	4S514-125
Cap - ADC Strainer	4H842
4" Dust Cap	400-DC
4" Adaptor	400-F-N-ADC

## COUPLERS, BALL VALVES, STRAINERS, ADAPTERS AND FITTINGS

### NYLON

- Good all around/all purpose material, strong.
- Good chemical resistance and excellent mechanical properties.
- Stronger than polypropylene.
- Resists cross threading and most hydrocarbons, solvents, agricultural chemicals and mild acids.
- Temperature range -30°F to 200°F.

### PVDF

- Use where ultra high purity is required.
- NSF compliant.
- Resists most corrosive chemicals, acids, bases, salts, solvents, halogens, chlorinated solvents and is an UL94-V0 listing.
- Good choice for high temperature and UV applications.
- Temperature range -20°F to 300°F.
- Can be used in place of Stainless Steel in many applications.

### POLYPROPYLENE

- Good chemical and corrosion resistance.
- Resists most acids, chemicals and fertilizers.
- Temperature range 10°F up to 180°F.

### FOOD-GRADE POLYPROPYLENE

- FDA / NSF compliant.
- Cost effective lightweight replacement for stainless steel.
- Temperature range 10°F to 180°F.
- Industry applications include food products, cosmetics, pharmaceutical processing.

### POLYETHYLENE

- Resists abrasion and tearing.
- Resists many solvents, oils and petroleum based fluids.
- Temperature range -65°F to 190°F.

### PVC

- Solvent cementable.
- Permanent installation.
- Resists many chemical solutions.
- Ideal for water transfer.
- Sewage system and pump quick disconnects.
- Temperature range 10°F to 140°F.

### SANTOPRENE®

- Special purpose.
- Excellent resistance to weather.
- Good chemical resistance.
- FDA applications—used for protective caps or plugs for stainless steel adapters and couplers.
- Temperature range -80°F to 275°F.

### STAINLESS STEEL

- 316 type.
- FDA / NSF compliant.
- Excellent chemical and corrosion resistance.
- Use for food service and processing.
- Conductive.

## GASKETS

### EPDM/EPT/EPR

- Best choice for most fertilizer and agricultural applications.
- Temperature range -50°F to 250°F.

### BUNA-N/NBR

- General purpose industrial—resistant to oil, hydraulic fluid, petroleum based fluids and water.
- Temperature range -40°F to 250°F.

### VITON®/FKM

- Superior resistance to most fuels, petroleum based fluids, chemicals and solvents.
- Temperature range -10°F to 350°F.

### NITRILE®/NBR

- Food grade, FDA applications.
- White color.
- Resistant to many oils and chemicals.
- Temperature range -40°F to 220°F.

### SANTOPRENE®/TPO

- Excellent resistance to weather and many chemicals.
- FDA applications.
- Temperature range -80°F to 275°F.

*Note: Above information is gathered from various manufacturers published charts and tables.*



# BASIC CHEMICAL RESISTANCE TABLE

FLUID	NY-GLASS	POLY-GLASS	PVC	PVDF	FLUID	NY-GLASS	POLY-GLASS	PVC	PVDF
Acetic Acid		S			Calcium Hypochlorite		S	S	
Acetic Anhydride		S			Calcium Nitrate, 40%		S	S	S
Acetone	S	S	U	U	Carbolic Acid (Phenol)	U			
Acetylene-Dry			S		Carbon Dioxide-Dry	S	S	S	S
Air	S	S			Carbon Disulfide			U	
Agricultural Lime	S	S			Carbon Tetrachloride	S		U	S
Alcohol-Amyl	S	S	S		Carbonated Beverages	S	S		
Alcohol-Butyl	S	S			Carbonic Acid	S	S	S	
Alcohol-Ethyl	S	S			Castor Oil	S	S	S	
Alcohol-Isopropyl	S	S			Caustic Potash	S	S	S	
Alcohol-Methyl	S	S			Caustic Soda	S	S		
Aluminum Chloride	U	S	S	S	Cellosolves				
Aluminum Fluoride, 20%	U	S	S	S	Chlorine-Dry		S	U	S
Aluminum Nitrate	U	S	S	S	Chlorobromomethane				
Aluminum Potassium Sulfate	U	S		S	Chloroform-Dry	S	S		S
Aluminum Sulfate	U	S			Chlorex	S			
Ammonia, Anhydrous					Chromic Acid, 50%	U	S	U	
Ammonia, Solutions	S	S		U	Citric Acid	S	S	S	S
Ammonium Chloride-Dry		S	S		Cobalized Super Compound		S		
Ammonium Hydroxide	P	S	S		Copper Chloride-Dry		S	S	S
Ammonium Nitrate		S	S	S	Copper Sulfate		S	S	S
Ammonium Phosphate		S	S		Copperized Super Compound		S		
Mono-basic		S			Corn Oil	S	S		
Di-Basic or Tri-Basic		S			Cottonseed Oil	S	S	S	
Ammonium Sulfate		S	S	S	Creosote				
Aniline		S	U		Cresylic Acid			S	
Arsenic Acid		S	S		Cyclohexane	S		U	S
Asphalt									
Barium Chloride	U	S	S	S	DDT			U	
Barium Hydroxide		S	S	U	Detergents	S	S	S	
Barium Sulfide		S	S		Developer Solution		S		
Basic Stag		S			Dextrose	S	S	S	
Beer	S	S	S						
Benzene/Benzol	S				Diesel Fuels	S	S	S	S
Benzine	S				Diethyl Sebacate			S	
Black Liquor (Paper Ind)		S	S		Disodium Phosphate		S	S	
Bleach (12.5% Chlorine)	U	S	S		Dowtherm		S		
Borax		S	S						
Boric Acid	P	S	S	S	Ethanolamine		S		
Brine	S	S	S		Ether	S		U	S
Bromic Acid		S	S		Ethyl Acetate	S	S	U	
Burnt Lime	S	S			Ethyl Chloride-Dry		U	U	
Butane	S	S	S	S	Ethylene		S		
Butadiene			S	S	Ethylene Dichloride-Dry		S	U	
Butyl Acetate-Dry			S		Ethylene Glycol	S	S	S	
Butyl Stearate			S		Fatty Acids	S	S	S	
Butylene			S		Ferric Chloride	P	S	S	
					Ferric Hydroxide		S	S	
Cadmium Cyanide		S	S		Ferric Nitrate		S	S	
Calcium Acetate		S			Ferric Sulfate	P	S	S	
Calcium Bisulfite		S	S		Fluoboric Acid		S	S	
Calcium Chloride	U	S	S	S	Formaldehyde, 405		S	S	
Calcium Hydroxide		S	S		Formalin		S		

# BASIC CHEMICAL RESISTANCE TABLE

FLUID	NY-GLASS	POLY-GLASS	PVC	PVDF
Formic Acid	U	S	S	S
Freon	S	S		
Fruit Juice: Grapefruit	S	S	S	
Lemon	S	S		
Pineapple	S	S		
Furfural		S	U	
Gas-Coke Oven	S	S	U	
Gasoline-Refined	S	U	U	S
Gasoline-Sour	S	U	U	
Gelatin	S	S		
Glucose	S	S	S	S
Glue	S	S		
Glycerine	S	S	S	S
Glycol	S	S	S	
Green Liquor (Paper Ind)		S	S	
Hexane	S		S	S
Hydrobromic Acid		S		
Hydrobromic Acid, 40%		S		
Hydrobromic Acid, 100%		S		
Hydrochloric Acid	U	S	S	
Hydrogen Chloride		S		
Gas-dry		S		S
Hydrogen Gas	S	S		S
Hydrogen Peroxide	U	S		S
Hydrogen Sulfide	U	S		
Hypochlorous Acid, 20%	U	S		
Iodide, Peroxide		S		
Isobutyl Acetate		S		
Isopropyl Acid	S	S		
Jet Fuel	S	U		
Kerosene	S	S		
Kraft Liquor (Paper Ind)		S	S	
Lacquers	S	U		
Lactic Acid, 20%	S	S	S	S
Lactic Acid, 70%		S		S
Lard	S	S	S	S
Lead: Chloride, Sulphate		S	S	
Lime Slurry	S	S		
Lime Sulphur		S		
Linoleic Acid		S	S	
Linseed Oil	S	S	S	S
L.P.G.	S			
Magnesium Carbonate	S	S	S	S
Magnesium Chloride	P	S	S	S
Magnesium Hydroxide	S	S	S	S
Magnesium Nitrate	P	S	S	S
Magnesium Sulfate	P	S	S	S
Meat and Bone Meal	S	S		

FLUID	NY-GLASS	POLY-GLASS	PVC	PVDF
Mercuric Chloride		S	S	S
Mercury		S	S	S
Methane	S	S		
Methanol	S	S		
Methyl Amyl Acetate		S		
Methylene Chloride	S	U	U	
Methyl Benzene	S	U		
Methyl Ethyl Ketone	S	S		
Milk	S	S	S	S
Mineral Oil	S	S	S	S
Molasses	S	S	S	
Muriate of Potash	S	S		
Muriatic Acid	U	S	S	
Mustard	S	S		S
Naptha	S		S	S
Nathalene			U	
Napthenic Acid		U		
Natural Gas	S	S	S	
Nickel Chloride		S	S	S
Nickel Sulfate		S		S
Nitric Acid	U	S		S
Nitrobenzene	S	S	U	
Nitro Lime		S		
Octane	S			
Oil-Core	S			
Oil-Fuel	S	S		
Oil-Hydraulic	S	S		
Oil-Petroleum	S			
Crude	S	S	S	
Refined	S	S		
Oil-Transmission	S	S		
Oil-Vegetable	S	U		
Oleic Acid	S	U	S	
Oleum	U	S	U	
Oxalic Acid	S	S	S	S
Oxygen	S	U	S	S
Palmitic Acid	S	S		
Paraffin	S	S	S	
Pentachlorophenol-Dry				
Perchlorethylene	S	U		
Phosphoric Acid	U	S		S
Photographic Solutions	S	S	S	
Phthalic Anhydride		S		
Picric Acid-Molten	U	S	U	
Aqueous Solution		S		
Plating Solutions, Chrome		S		
Potassium Acetate		S		
Potassium Chloride	S	S	S	S
Potassium Cyanide	S	S	S	
Potassium Dichromate	U	S	S	S
Potassium Fluoride	S	S	S	



# BASIC CHEMICAL RESISTANCE TABLE

FLUID	NY-GLASS	POLY-GLASS	PVC	PVDF
Potassium Hydroxide, 30%	S	S	S	
Potassium Nitrate	S	S	S	S
Potassium Sulfate	S	S		S
Propane	S	S	S	
Propionic Acid	S	S		
Propylene Glycol	S	S		
Rosin	S	S		
Salt Water	S	S	S	S
Shellac	S	S		
Silicone Fluid	S	S		
Silicone Oil	S	S		
Silver Nitrate	S	S	S	S
Soap Solutions	S	S	S	
Soda Ash	S	S		
Sodium Bicarbonate	S	S	S	
Sodium Bisulfate		S	S	
Sodium Borate	S	S		
Perborate	S	S		
Sodium Carbonate	S	S	S	S
Sodium Chloride	S	S	S	S
Sodium Cyanide, 10%	S	S	S	S
Sodium Dichromate, 10%		S		
Sodium Hydroxide, 40%	S	S	S	
Sodium Hypochlorite, 20%	U	S	S	
Sodium Metaphosphate	S	S		
Sodium Nitrate	S	S	S	S
Sodium Peroxide		S	S	
Sodium Phosphate-				
Mono-Basic		S		
Di-Basic		S		
Tri-Basic		S		
Sodium Silicate		S		S
Sodium Sulfate	S	S	S	S
Sodium Sulfide		S	S	
Sodium Thiosulfate		S	S	S
Soybean Oil	S	S		
Stannic Chloride	U	S	S	
Stannous Chloride, 15%	U	S		
Steam				
Stearic Acid		S	S	
Stoddard Solvent		S	U	
Styrene		U		
Sugar Liquors-Cane	S	S		
Beet	S	S		
Sulfate Liquors		S		
Sulphite Liquors		S	S	
Sulfuric Acid	U	S		S
Sulfurous Acid	U	S	S	
Superphosphate		S		
Tannic Acid, 10%		S	S	S
Tar-Wood		S		
Tartaric Acid	S	S	S	S

FLUID	NY-GLASS	POLY-GLASS	PVC	PVDF
Titanium Tetrachloride-				
Dry		S	U	
Toluene/Toluol	S	U	S	
Tetrachlorethylene	S	U		
Trichloroethylene-Dry	S	U		
Triethanolamine		S	S	S
Trisodium Phosphate	S	S	S	
Urea		S	S	S
Urine	S	S	S	
Varnish	S			
Vinegar	S	S	S	
Water-Acid Mine	S	S	S	
Deionized	S	S		
Demineralized	S	S		
Distilled	S	S		
Fresh	S	S		
Salt	S	S		S
White Liquor (Paper Ind)		S	S	
Wine	S	S	S	
Xylene/Xylol	S		U	
Zinc Chloride		S	S	S
Zinc Nitrate, Sulphate	S	S	S	S

## LEGEND:

**S - Satisfactory**

**P - Poor**

**U - Unsatisfactory**

**Blank - Not tested**

Bee Valve Inc. products are not intended for use in applications which might subject products to pressures that exceed the maximum recommended temperatures and/or pressures. Further allowance must be made to the recommended ratings based on specific operating conditions. Application and product age must also be considered for suitability and safe use.

Bee Valve Inc. has endeavored to ensure that the information contained in this catalog is accurate and reliable based upon tests believed to be reliable; as well as practical field experience. However, since conditions of use are beyond the control of the manufacturer, it is the customer's/user's responsibility to determine the suitability of Bee Valve Inc. products in any specific application. No warranty is expressed or implied.

**For Technical Assistance call 800.634.3078**



**BEE VALVE INC.**

**1150 Taylor Street, Elyria, OH 44035**

**T: 440.366.0220 F: 440.366.0198  
800.634.3078 • [www.beevalve.com](http://www.beevalve.com)**

***For Technical Assistance Call: 800.634.3078***

***Distributed by:***

